



REBELLS OF THE WEST

17TH ANNUAL
SIMMENTAL & ANGUS
BULL SALE

SUNDAY, MARCH 14, 2021 - 2:00PM CDT
AT HORNER CATTLE CO SALE BARN, MINNEDOSA, MANITOBA

WELCOME FROM FIRST CLASS CATTLE MARKETING

Welcome to the 17th Annual Rebels of the West Simmental & Angus Bull Sale. New for 2021 the sale will see a location change. The sale will now take place at the Horner Cattle Co sale barn in Minnedosa, MB. This will once again remain as a live sale with a live auctioneer. The bulls will all be onsite at Horner Cattle Co for viewing. The bulls on offer this year are once again the right kind. They are stout, hairy, sound, good footed bulls. The consignors have all bred these bulls with the commercial cattleman in mind and have fed them to last. These bulls are designed to go out at work so please bid and buy with confidence. On offer are a large number of bulls that will fit almost any commercial cattle operation. There is a large number of both power bulls for the cow pen as well as calving ease bulls to run with a group of heifers. The bulls will all be semen tested and ready to go and are also guaranteed 100%.

Please plan on joining us March 14th in Minnedosa for the 17th Annual Rebels of the West Simmental & Angus Bull Sale. If for any reason you are unable to attend the sale please feel free to give any of us at First Class Cattle Marketing a call. All of us will be very familiar with the cattle and it will be our pleasure to assist you in a professional and confidential manner in the purchase of your next herd sire. Mark Shologan with DLMS will also be onsite of internet bidding is what you prefer. I hope to see everyone in Minnedosa and wish you all a very successful spring bull sale season.

Regards,
Darnell Fornwald

FIRST CLASS CATTLE MARKETING

www.firstclasscattlemarketing.com
BOX 1740 CROSSFIELD, AB T0M 0S0
firstclasscattlemarketing@gmail.com



Darnell Fornwald
(403) 795-8030



Shay Martindale
(780) 812-4581



Jonathan Karsin
(204) 870-0329

REBELS OF THE WEST

SIMMENTAL AND ANGUS BULL SALE

SUNDAY, MARCH 14, 2021 - 2:00PM CDT AT HORNER CATTLE SALE BARN, MINNEDOSA, MB

Sale Day Information

SALE DAY PHONES

Darnell Fornwald 403-795-8030
Shay Martindale 780-812-4581
Jonathan Karsin 204-870-0329
Terry Kaskiw 431-286-0006
Lionel Kaskiw 204-483-0531
Tyson Birmingham 204-724-2004
Everett More 204-851-1737
Everett Olson 204-867-0076
Allan Downey 204-761-8207
Ryan Downey 204-522-0838
Jake Rawluk 204-768-0284
Laura Horner 204-868-5335

AUCTIONEER

Steve Dorran 760-972-7736

RINGMEN

Kolton McIntosh 204-280-0359

DIRECTIONS TO THE SALE

Directions to Horner Cattle Co... North of Brandon on highway 10 towards Minnedosa and North on Service Road 107.

From Minnedosa... South of the hwy 10 and 16 junction, and is North on Service Road 107.

INSURANCE

Keystone Livestock Services
Lois McRae 204-728-3058

100% GUARANTEE

All bulls are guaranteed to be satisfactory breeders in accordance with CSA guidelines. Should a problem occur barring injury or mismanagement, a bull of equal value will be provided or a credit will be issued towards the purchase of another bull. We guarantee you will have a bull to service your cows.

INTERNET BIDDING AVAILABLE

DLMS 780-699-5082



Mark Shologan 780-699-5082

Go to dlms.ca for more information

IN-HERD USE SEMEN RIGHTS

The consignors reserve the right to collect semen on any bull in the sale for in-herd use only. If you have any questions please contact us.

HEALTH AND FERTILITY

All bulls have been treated with Ivermectin and have current vaccinations. Contact breeder for specific herd health programs.

BULL DEVELOPMENT & DELIVERY

Consignors will keep the bulls free of charge until May 15, 2021. Bull buyers must insure the bulls while cared for by the consignor.

Delivery Option A

Bulls can be picked up on sale day and a \$50 discount will be deducted from purchase price.

Delivery Option B

At the buyer's option and risk, the bull can return to the consignor's farm and delivered anywhere in Western Canada at no charge to central locations. We will do our utmost to deliver them right to your yard.

Delivery Option C

Bulls can return to the farm and be picked up any time at the buyer's convenience.

SIGHT-UNSEEN PURCHASE PROGRAM

If you are unable to attend the sale but are interested in bulls, give the consignors a call and they will personally go over the bulls and your program to recommend the bulls or females that would meet your needs and refer you to one of the sales staff who will represent your needs in a professional and confidential manner.

EPD EXPLANATION

EPDs are "Expected Progeny Differences." They are a useful tool in selection. EPDs incorporate the individual animal with its ancestry performance. EPDs do not compare across cattle breeds. They are individual-based per breed. EPDs indicate a probable variance above or below breed average for that trait for a given bull's progeny. The accuracy of EPDs for calendar year bull calves is generally above 20% (one out of five times) so use it cautiously as one of several selection tools.

CANADIAN ASSOCIATION SPRING 2021 BREED AVERAGES

Simmental	CE 6.9	BW 3.8	WW 75.3	YW 110.6	MCE 4.0	Milk 28.6	MWWT 66.2
Angus	BW 2.1	WW 48	YW 62	Milk 22	CE 3.4	MCE 7.0	

Catalogue production by First Class Cattle Marketing
together with 14 West Creations

TSN LIVESTOCK

Tyson and Alisha Birmingham

RR 1, Rapid City, Manitoba R0K 1W0

tybirm@hotmail.com

Tyson's cell: 204-724-2004

Welcome to the Rebels of the West Bull sale.

This year we will lead off with a group of Game Face sons. These bulls are moderate, powerful, but yet have the calving ease. We will also feature a couple strong bulls off our herd sire LFE Night Hawk. The Night Hawk calve very easy, lots of vigour and grow exceptionally well for a calving ease sire. If you need a bull with some calving ease, but doesn't lack for performance take a look at the Night Hawk bull calves. This is definitely a different year! We made the decision to move the sale to the Horner bull yard at Minnedosa. And at this time we want to truly thank the Horner for accommodating the group. With the current situation we are more than willing to tour anyone thru the bull pen prior to the sale, or come and go once we settle in Horner's bull yard. If you have any questions about our offering please give us a call or any of the sales staff. Please join us on March 14 to look through the bulls and have some Rebels hospitality.

See you at the sale!!



Sire: LFE Game Face 338F

HOMO POLLED/HETRO BLACK
Our lead off bull this year is a Game Face son out of one of our top cows MRL 444X. This cow has done a tremendous job over the years putting top end bulls in the sale. (103H half brother was the high selling bull in last year's sale going to Sand Hills Simmentals.) 103H is a real long made bull with lots of shape and thickness throughout. 103H has a great foot under him and moves real well. Here is a bull that checks off all the boxes, he will add pounds to your next calf crop.

LOT
1

TSN Game Face 103H

Polled Purebred TSN 103H BPG1335497 Jan 20, 2020

LFE CASH 386D
sire LFE GAME FACE 338F
LFE BS AMBER 60D

WHEATLAND BULL 680S
dam MRL MISS 444X
MRL MISS 429N

LFE BOUNTY 3118Z
LFE BS FIRSTBASE 39B
NCB COBRA 47Y
LFE BS AMBER 125B
WHEATLAND BULL 131L
WHEATLAND LADY 351N
MR BEEF E141
KNH DAKOTA 32J

BW	Sept 10WW	CE	BW	WW	YW	Milk	MCE	MWWT
96	960	5.1	4.4	77.4	120.0	26.6	0.8	65.3

**LOT
2****TSN Game Face 110H**

Polled Purebred TSN 110H BPG1335506 Jan 20, 2020

LFE CASH 386D
 sire **LFE GAME FACE 338F**
 LFE BS AMBER 60D

LBR CROCKET R81
 dam **TSN MS CROCKETT 56W**
 CREST'S VIEW SABRINA 28N

LFE BOUNTY 3118Z
 LFE BS FIRSTBASE 39B
 NCB COBRA 47Y
 LFE BS AMBER 125B
 KENCO/MF POWERLINE 204L
 LBR NIGHT DREAM M22
 LCHMN BODYBUILDER 7303F
 CREST'S-VIEW CLASSY LADY

BW	Sept 10WW	CE	BW	WW	YW	Milk	MCE	MWWT
98	800	4.6	4.9	80.6	122.6	29.7	2.7	70.0

HOMO POLLED/HETERO BLACK Here is another Game Face son that will add performance to your herd. This guy is probably the biggest ribbed and round quartered bull in the pen. Lots of performance in this bull, yet smooth made, sound and has an attractive look. Here is a bull you will want to mark down.

**LOT
3****TSN Night Hawk 153H**

Polled Purebred TSN 153H BPG1335514 Feb 09, 2020

LFE TRIUMPH 816A
 sire **LFE NIGHT HAWK 3013D**
 LFE RRS CIARA 2158Z

MRL BREWER 113C
 dam **TSN MS BREWER 899F**
 MRL MISS 899S

LFE BEER MONEY 811Y
 LFE BISS BS SUNSHINE 609X
 LFE PUNK 407U
 RRS OBSESSION 87T
 SVS MILWAUKEE 53A
 RTC/JETS SECOND EDITION
 LFE RED HEMI 391N
 MRL MISS 541N

BW	Sept 10WW	CE	BW	WW	YW	Milk	MCE	MWWT
95	810	11.3	2.2	74.5	111.3	22.6	7.4	59.9

HETERO POLLED/HETERO BLACK Here is a power son off our walking herd bull Night Hawk. If you want a bull with some calving ease but still have lots of performance this is the bull. 153H is a long made, wide topped bull with a good set of EPDs - Top 15% for CE and top 10% for MCE. His daughters will be exceptional.

**LOT
4****TSN Night Hawk 112H**

Polled Purebred TSN 112H BPG1335513 Jan 22, 2020

LFE TRIUMPH 816A
 sire **LFE NIGHT HAWK 3013D**
 LFE RRS CIARA 2158Z

MRL BREWER 113C
 dam **TSN MS BREWER 12E**
 TSN MS CROCKETT 56W

LFE BEER MONEY 811Y
 LFE BISS BS SUNSHINE 609X
 LFE PUNK 407U
 RRS OBSESSION 87T
 SVS MILWAUKEE 53A
 RTC/JETS SECOND EDITION
 LBR CROCKET R81
 CREST'S VIEW SABRINA 28N

BW	Sept 10WW	CE	BW	WW	YW	Milk	MCE	MWWT
90	740	11.2	2.0	73.6	108.9	23.7	6.1	60.5

HOMO POLLED Here is another Night Hawk son out of a good young Brewer female. This bull is long, smooth made with lots of top and quarter. The Night Hawk progeny are really making their mark out there producing top end bull calves and excellent females.





**LOT
5**

TSN Night Hawk 111H

Polled Purebred TSN 111H BPG1335501 Jan 22, 2020

BW	Sept 10WW	CE	BW	WW	YW	Milk	MCE	MWWT
80	760	11.4	1.3	66.6	97.8	21.3	7.6	54.6



Sire: LFE Night Hawk 3013D

HOMO POLLED/HETRO BLACK

Here is one of my favorite bulls in the pen. If you're looking for a bull to cover the heifer pen - this is the bull. Check out this guy's pedigree- A Night Hawk out of TSN 99F (A full sister to the popular donor cow at MRL, TSN 55W). 111H is a true heifer bull with EPDs in top 15% in both CE and BW. He is a real smooth made bull, with small head. This guy will calve nice but will leave a set of calves with pounds.

sire LFE TRIUMPH 816A
LFE NIGHT HAWK 3013D
LFE RRS CIARA 2158Z

dam TH BLACK EDITION 8R
TSN MS EDITION 99F
MRL MISS 899S

LFE BEER MONEY 811Y
LFE BISS BS SUNSHINE 609X
LFE PUNK 407U
RRS OBSESSION 87T
TNT DYNAMITE BLACK L137
BBN MS BLACK LADY 28H
LFE RED HEMI 391N
MRL MISS 541N

**LOT
6**

TSN Voltage 90H

Polled Purebred TSN 90H BPG1335523 Jan 17, 2020

sire HTP/SVF DURACELL T52
SS/PRS HIGH VOLTAGE 244X
KENCO MILEY COTTONTAIL

dam MRL MISSILE 138C
KWA MS MISSILE 19F
KWA MS WESTERN 178 B

CNS DREAM ON L186
HTP SVF HONEYDEW
GWS EBONYS TRADEMARK 6N
JM DICE-H25-L24
COME AS U R RED ROCKET
MRL MISS 2423Z
IPU RED WESTERN 49X
DOUBLE BAR D PIXIE 75T

BW	Sept 10WW	CE	BW	WW	YW	Milk	MCE	MWWT
80	725	10.7	1.6	81.8	108.9	18.0	4.7	58.9

HOMO POLLED Here is another bull for the heifer pen. 90H is a hairy, smooth made bull with lots of middle and has a great foot. 90H calves will come easy yet get up and grow. His dam did a heck of a job her first time with this guy; she is a nice moderate cow with a great udder.



ARROW CREEK SIMMENTALS

Lionel Kaskiw Terry Kaskiw

Box 494, Rossburn, Manitoba R0J 1V0

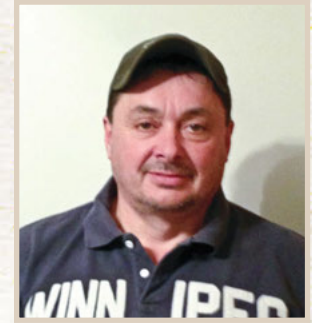
We would like to welcome everyone to the 17th annual Rebels of the West Bull Sale. We are happy to have served our customers over the years and look forward to a few more years. Times are changing and who better than a cattle producer to adapt to these changes and make things work. A big change for the sale this year is moving from Virden to Horners at Minnedosa. We would like to thank Laura, Jake and Allan from Horner Cattle Company for making the yard available for the sale. With the bulls being at the farm they will settle in fast and be ready for your viewing.

Welcome to Darnell and crew from First Class Cattle Marketing for putting this online live auction together. Also to Mark and DMLS for broadcasting the sale and making it easy to bid.

Our group is a little smaller this year as we have a great pen of replacement females. The main herd starts calving late Jan to early February so the group will be a little smaller than some of the Jan born bulls but the quality runs deep. We have a select group of AI and Embryo bulls this year as well as sons off of Big Business a bull that sold through this sale in 2019 as a high seller. We have used him on heifers and mature cows and have great success. Look through the catalogue and pick out your next herd sire. If you have any questions feel free to call or better yet come down to the farm and see them and there mothers. Always have time for a visit and a coffee or beverage. If you can, come down sale day or make arrangements to bid online or give Darnell or one of us a call. Thanks in advance for your purchases.



Lionel Kaskiw
204-483-0531



Terry Kaskiw
431-286-0006



Dam: Tripile C Smarty Pants R



**daughter of Smarty Pants R:
Miss Smarty Pants III**



**daughter of Smarty Pants R:
Miss Smarty Pants II**

**LOT
7**

Polled Purebred

KASK 7H

ACS Regulator 7H
Applied For Jan 23, 2020

sire MRL CAPONE 130B
MRL REGULATOR 148D
MRL MISS 677Y

dam TRIPLE C EL PODEROSO REY
TRIPLE C SMARTY PANTS R
GFI GRAMMS DELIGHT L17

TNT BOOTLEGER Z268
MRL MISS 836W
KOP CROSBY 137W
MRL MISS 355T
HC POWER DRIVE 88H
JSF FIESTA
GFI HF EXPLOSION G023
GFI MISS AMOS 705G

BW	WW	CE	BW	WW	YW	Milk	MCE	MWWT
85	685	3.3	5.4	79.2	116	23.3	4.1	62.9

An end of January bull out of the great Smarty Pants cow and Regulator. An opportunity to add genetics of one of the best female makers in the industry. Loaded in maternal traits gives you an all in one package. A bull that will add the extra length to your calves that will bring in extra pounds in the fall. And you will want to keep as many replacements as you can.



Sire: MRL Regulator 148D



Dam: ACS Country Girl 66D

LOT
8

Polled Purebred KASK 25H

ACS Regulator 25H
Applied For Feb 02, 2020

sire MRL CAPONE 130B
MRL REGULATOR 148D
MRL MISS 677Y

dam CDI AUTHORITY 77X
ACS COUNTRY GIRL 66D
ACS MS RIBEYE 21N

BW	WW	CE	BW	WW	YW	Milk	MCE	MWWT
76	652	2.7	6.3	89.0	136.3	24.5	1.5	69.0

TNT BOOTLEGER Z268
MRL MISS 836W
KOP CROSBY 137W
MRL MISS 355T
NF TRUMP S582
CDI MS CROCKET 88T
R PLUS RED RIBEYE 1134L
HAAS RANCH G217



Maternal Grand sire: CDI Authority

LOT
9

Polled Purebred KASK 26H

ACS Regulator 26H
Applied For Feb 02, 2020

sire MRL CAPONE 130B
MRL REGULATOR 148D
MRL MISS 677Y

dam CDI AUTHORITY 77X
ACS COUNTRY GIRL 66D
ACS MS RIBEYE 21N

BW	WW	CE	BW	WW	YW	Milk	MCE	MWWT
80	705	2.7	6.3	89.0	136.3	24.5	1.5	69.0

TNT BOOTLEGER Z268
MRL MISS 836W
KOP CROSBY 137W
MRL MISS 355T
NF TRUMP S582
CDI MS CROCKET 88T
R PLUS RED RIBEYE 1134L
HAAS RANCH G217



Sire: Wheatland Red Express 890F



Dam: BBN Miss Smarty Pants 400D

LOT 10

Polled Purebred KASK 62H

ACS Express 62H
Applied For Feb 26, 2020

WHEATLAND EXCHANGE 6139D
sire **WHEATLAND RED EXPRESS 890F**
WHEATLAND LADY 212Z

IPU RED WESTERN 49X
dam **BBN MISS SMARTY 400D**
MRL MISS SMARTY PANTS III

PROFIT
WHEATLAND LADY 913W
WHEATLAND STOUT 930W
WHEATLAND LADY 93X
WS BEEF MAKER R13
IPU 52N POCAHONTAS 215U
LFE RED CASINO 3036X
TRIPLE C SMARTY PANTS R

BW	WW	CE	BW	WW	YW	Milk	MCE	MWWT
84	700	3.7	5.2	79.7	116.2	23.4	1.1	63.4

HOMO POLLED A stand out individual with a lot of style. Smooth made with good muscle development and moves around freely. His dam is the complete package big middled, sound footed and feminine front ended. He is an end of February calf but is coming along and competing with his pen mates. Once again an opportunity to add a herd bull that will stack the replacement pen with great females.

LOT 11

Polled Purebred KASK 60H

ACS Longbranch 60H
Applied For Feb 02, 2020

TNT BOOTLEGGER Z268
sire **MRL RED WHISKEY 101B**
MRL MISS 677Y

MRL DRILLER 107Z
dam **MRL MISS 5593C**
TSN REBECCA 8R

DCR MR MOON SHINE X102
TNT MISS W70
KOP CROSBY 137W
MRL MISS 355T
LFE BUNDI 300X
MRL MISS 493U
SRS FORTUNE 500
DXH MS 600 PLUS 2M

BW	WW	CE	BW	WW	YW	Milk	MCE	MWWT
84	660	6.8	4.6	89.9	130.2	24.2	6.1	69.1

HOMO POLLED A dark Red Whiskey son that is built right, good thickness and excellent disposition. This guy will sire you a strong set of calves. Red Whiskey is one of the most popular red herd sires in the industry today. He is in the top 5% in the breed for weaning and yearling.



Sire: MRL Red Whiskey 101B





**LOT
12**

Polled Purebred KASK 65H
ACS Command 65H
 Applied For Feb 12, 2020

BW	WW	CE	BW	WW	YW	Milk	MCE	MWWT
78	645	12.7	0.7	83	120.4	31.3	7.3	72.8

CCR COWBOY CUT 5048Z
 sire **WS PROCLAMATION E202**
 WS MISS SUGAR C4

GOLDEN OPPORTUNITYHR R851
 dam **ACS Golden 17G**
 ACS Gracie 2D

TRIPLE C SINGLETARY S3H
 CCR MS 4045 TIME 7322T
 CLRS GRADE-A 875 A
 WS ANISE A71
 SS GOLD MINE L42
 HS REFLECTIONS J34
 OLF ODIN U5
 HPF MS NIGHT DREAM M22



Sire: WS Proclamation E202

HOMO POLLED A bull made for the heifer pen. He is smooth fronted and has the extra length that will stretch out those calves. His sire Proclamation is known for his calving ease and is rated in the top 1% in the breed. He is also in the top 1% for weaning and yearling weights. Take a close look at his dam a Golden Opportunity female that is also rated high for calving ease. Calving ease and performance in one package. With milk numbers in the top 25% of the breed.



**LOT
13**

Polled Purebred KASK 6H
ACS Proclamation 6H
 Applied For Jan 20, 2020

CCR COWBOY CUT 5048Z
 sire **WS PROCLAMATION E202**
 WS MISS SUGAR C4

ACS BLACKGOLD 337A
 dam **NEW HOPE BLACK MALITA 21D**
 MFI MALITA 5107

TRIPLE C SINGLETARY S3H
 CCR MS 4045 TIME 7322T
 CLRS GRADE-A 875 A
 WS ANISE A71
 WHEATLAND HIGH OCTANE169Y
 MS BLACK LASS 14S
 LS LEGACY M565
 ANCHOR "T" PERLE 43E

BW	WW	CE	BW	WW	YW	Milk	MCE	MWWT
100	640	7.8	3.0	84.3	126.1	30.7	4.0	40.8

A pretty good Proclamation son here long bodied, big hipped and wide butted. These Proclamation sons are bred for calving ease and performance. His dam with some fleckvieh values will add some thickness into the calves he sires.



HOMO POLLED A full brother to ACS Big Business one of the high selling bulls in the 2019 Rebels sale. We really like the depth of body and the over all thickness of this guy while still maintain a smooth front end. We used Big Business in the herd and are very happy with his calves. They come easy and grow fast. Have to mention the dam of this guy ACS Rebel's Girl 273Z one of the most consistent red females in the herd.

LOT 14

Polled Purebred KASK 71H Applied For Feb 14, 2020

ACS Investment 71H

COME AS U R RED ROCKET
 sire **COME AS U R FRANCHISE 31C**
 MRL MISS 2423Z

WHEATLAND HEADLINE 872U
 dam **ACS REBEL'S GIRL 273Z**
 SPRINGCREEK GRACIE 43W

MRL 130Y
 MRL MISS 2423Z
 LFE BUNDI 300X
 MRL MISS 493U
 WHEATLAND BULL 680S
 WHEATLAND LADY 609 S
 ACS RED REBEL 656S
 SPRINGCREEK RED TARA 62S

BW	WW	CE	BW	WW	YW	Milk	MCE	MWWT
88	670	7.9	3.7	74.6	106.8	23.2	3.7	60.5



Dam: ACS Rebel's Girl 273Z



Son of 273Z: ACS Gambino 570C
 Maternal Brother to Lot 14
 Sold in 2016 to Sunny Valley Simmentals



273Z son: ACS Big Business 841F
 (sire to 66H)

LOT 15

Polled Purebred KASK 66H Applied For Feb 18, 2020

ACS Enterprise 66H

COME AS U R FRANCHISE 31C
 sire **ACS BIG BUSINESS 841F**
 ACS REBEL'S GIRL 273Z

WHEATLAND HIGH OCTANE169Y
 dam **ACS LIZZY 358A**
 CHUB'S RUBY 11T

COME AS U R RED ROCKET
 MRL MISS 2423Z
 WHEATLAND HEADLINE 872U
 SPRINGCREEK GRACIE 43W
 WHEATLAND PREDATOR 922W
 WHEATLAND LADY 351N
 KENCO/MF POWERLINE 204L
 CEN MISS RED RUSH 439R

BW	WW	CE	BW	WW	YW	Milk	MCE	MWWT
90	695	7.4	4.0	72.5	107.5	22.6	1.9	58.8

HOMO POLLED These Big Business sons are like peas in a pod, the Big Business stamp. Deep bodied, thick and easy doing. Looking for a couple of bulls to throw into the heifer pen take a look at these guys.





LOT 16

Polled Purebred KASK 68H

ACS Corporate 68H

Applied For Jan 30, 2020

COME AS U R FRANCHISE 31C
 sire **ACS BIG BUSINESS 841F**
 ACS REBEL'S GIRL 273Z

TNT TOP GUN R244
 dam **BBN MS RED LADY 33U**
 BBN MS QUEEN IN BLACK 11S

COME AS U R RED ROCKET
 MRL MISS 2423Z
 WHEATLAND HEADLINE 872U
 SPRINGCREEK GRACIE 43W
 TNT GUNNER N208
 TNT MISS SADIE M68
 BH LIMITED BLACK 015K
 MCC STACY 103H

BW	WW	CE	BW	WW	YW	Milk	MCE	MWWT
92	705	7.4	3.1	70.6	102.0	19.8	3.4	55.1



HOMO POLLED A moderate framed Big Business son that has good width over his top and quarter. I mentioned that we were able to use him and we are very happy with his calves. They come easy and are up fast and growing.

ACS Priceless 507C
 Maternal Sister to Lot 16



LOT 17

Polled Purebred KASK 27H

ACS Monopoly 27H

Applied For Feb 14, 2020

COME AS U R FRANCHISE 31C
 sire **ACS BIG BUSINESS 841F**
 ACS REBEL'S GIRL 273Z

ANCHOR "T" RUSTY 59G
 dam **NEW HOPE PETRA 12Z**
 MFI PETRA 117M

COME AS U R RED ROCKET
 MRL MISS 2423Z
 WHEATLAND HEADLINE 872U
 SPRINGCREEK GRACIE 43W
 KLONDIKE GOLD RUSH 418B
 ANCHOR "T" HELGA 10Y
 BEL STEWARD 2ND
 MFI PETRA 3J

BW	WW	CE	BW	WW	YW	Milk	MCE	MWWT
102	620	7.3	5.1	75.4	108.7	30.1	4.0	67.8

Take a look at the pedigree here you have Big Business on the sire side and on the dam side you have Anchor D Rusty and MFI Petra adding a good shoot of fleckvieh into black genetics. Heifer calves of this guy should turn into real productive females.



LOT 18

Polled Purebred KASK 61H

ACS Franchise 61H

Applied For Feb 20, 2020

COME AS U R RED ROCKET
 sire **COME AS U R FRANCHISE 31C**
 MRL MISS 2423Z

LFE BISS BLACKADVANCE 426U
 dam **ACS DREAM GIRL 280Z**
 HPF MS NIGHT DREAM M22

MRL 130Y
 MRL MISS 2423Z
 LFE BUNDI 300X
 MRL MISS 493U
 REMINGTON ON TARGET 2S
 LFE BILLY 80M
 KENCO/MF POWERLINE 204L
 LBR NIGHT DREAM M22

BW	WW	CE	BW	WW	YW	Milk	MCE	MWWT
88	640	5.5	4.1	75.9	111.6	21.5	1.9	59.5

HOMO POLLED Good cows raise good bulls. Wide, deep bodied and thick all over with great hair and super disposition. His sire Franchise has left us with several females in the herd and we have marketed several of his sons through this sale. Franchise sons calve easy and will sire you a strong set of calves.

MORE BROS SIMMENTALS

Everett More and Irene Vanin

Box 1754, Virden, Manitoba R0M 2C0
 emsim1946@gmail.com
 C: 204-851-1737

We are pleased to be back for our 8th year as consignors to the Rebels sale. Due to anticipated Covid restrictions, and in response, the sale moved to Horner Cattle Co at Minnedosa, and being essentially an online sale with limited in person attendance, we along with Downey Farms will have our bulls displayed at Heartland Auction, Virden on Friday, March 5, from 10 am till 7 pm. They will also be at Minnedosa on March 12 to 14 along with the rest of the Rebels Sale consignments. We would also welcome an on farm visit to see the bulls in their pen at home.

Our bulls were not creep fed as calves. After weaning they were carefully introduced to grain in their ration, and then fed a moderate energy ration formulated with a target gain of three pounds per day. These two management decisions allow us to evaluate their true genetic potential, and will also promote their soundness and longevity as herd bulls. They are fully vaccinated as part of our comprehensive herd health program including their initial and booster Fusogard (foot rot) vaccination, and have been given a rumen magnet. They are tie broke and quiet. Pictures were taken in late December and Videos done mid February.



HOMO POLLED/HETERO BLACK
 A bull that touches all the bases. Born unassisted out of a two year old heifer with a short gestation of 275 days. Our top adjusted yearling weight at 1551 lbs. He is wide topped especially over his full quartered hip and has a clean attractive front end, and has a good square foot. His calving and performance EPD's are well above breed average to go along with a bred average milk EPD.



Sire: Hart State of War

LOT 19

Polled Purebred

MEM 2H

More's Hitchhiker 2H
 BPG1314729 Jan 13, 2020

WELSH'S WARSAW 312Z
 sire **HART STATE OF WAR 056C**
 HART MISS 102A

WHEATLAND TERMINATOR 202Z
 dam **MORE'S MS FARRAH 803F**
 MORE'S MS ZOEY 218Z

FBFS WARSAW 068W
 WELSHS ROSIE 102W
 SKORS BLACK ENTICER 287Y
 HART MISS X534
 WHEATLAND PREDATOR 922W
 WHEATLAND LADY 763T
 LFE BOMBSHELL 508N
 MORE'S MS XABRINA 1X

BW	AWW	AYW	CE	BW	WW	YW	Milk	MCE	MWWT
96	890	1551	16.2	-0.7	77.3	118.6	27.0	8.4	65.7



3H: HOMO POLLED BY PARENTAGE/HOMO BLACK
 Our top adjusted weaning weight of 961 lbs (no creep and native summer pasture). He is a deep sided, long bodied bull with a smooth shoulder and a good big square foot. He has a bit extra birth weight, however was carried by a recipient mother who has had a couple of heavier birth weight natural calves, so she may have contributed to his birth weight.



Sire: LFE The Riddler 323B

LOT
20

More's Hilton 3H

Polled Purebred MEM 3H Applied For Jan 16, 2020

LFE GOTHAM 819Y
 sire LFE THE RIDDLER 323B
 LFE BS CHARO 23Y

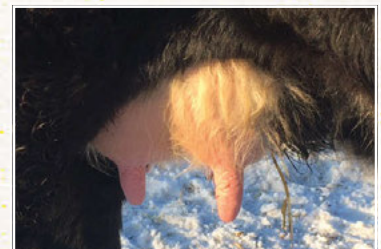
LFE THE DARK NIGHT 350U
 LFE BEST LADY 47W
 TNT TANKER U263
 LFE CHARO 3N
 TNT GUNNER N208
 TNT MISS SADIE M68
 PVF-BF BF26 BLACK JOKER
 BLUERIDGE RED LADY 21L

BW	AWW	AYW	CE	BW	WW	YW	Milk	MCE	MWWT
109	961	1507	7.3	2.2	89.5	143.8	29.1	6.0	73.9

TNT TOP GUN R244
 dam MORE'S MS WHOOPI 904W
 MORE'S MS SWEETHEART 618S



3H AND 5H Full brother embryos from a donor cow who in the past has regularly produced bulls who were at the top of our bull pen. They are sired by the highly proven performance bull "Riddler". Their performance EPD's are well above breed average while calving and milk EPD's are also above average.



Udder on Two Year Old: Full Sister to 3H and 5H

5H: HOMO POLLED BY PARENTAGE/HETERO BLACK
 A good topped, full ribbed soft made bull with a full quarter and a tidy attractive head. He has a little less jam than his brother, but is a bit thicker quartered of the two.

LOT
21

More's Hercules 5H

Polled Purebred MEM 5H Applied For Jan 17, 2020

LFE GOTHAM 819Y
 sire LFE THE RIDDLER 323B
 LFE BS CHARO 23Y

LFE THE DARK NIGHT 350U
 LFE BEST LADY 47W
 TNT TANKER U263
 LFE CHARO 3N
 TNT GUNNER N208
 TNT MISS SADIE M68
 PVF-BF BF26 BLACK JOKER
 BLUERIDGE RED LADY 21L

BW	AWW	AYW	CE	BW	WW	YW	Milk	MCE	MWWT
93	917	1362	7.3	2.2	89.5	143.8	29.1	6.0	73.9

TNT TOP GUN R244
 dam MORE'S MS WHOOPI 904W
 MORE'S MS SWEETHEART 618S

**LOT
22****More's Hyatt 15H**

Polled Purebred MEM 15H BPG1314747 Jan 31, 2020

LRX BLAZE 55Z
 sire **RJY CHROME 6B**
 RJY DREAM DOUBLEDATE 15X

NICHOLS LEGACY G151
 dam **MORE'S MS DARK ANGEL**
 MORE'S MS WHOOP! 904W

HARVIE JDF WALLBANGER111X
 LRX RED 116U
 WHEATLAND BULL 468P
 SS EBONYS DREAMDATE SS27
 NICHOLS BLK DESTINY D12
 NICHOLS DEBRA D81
 TNT TOP GUN R244
 MORE'S MS SWEETHEART 618S



BW	AWW	AYW	CE	BW	WW	YW	Milk	MCE	MWWT
81	908	1353	12.2	0.2	76.6	113.2	25.8	8.0	64.1

HOMO POLLED BY PARENTAGE/HOMO BLACK Out of the same cow family as 3H and 5H. His dam 608D is now 3 for 3 in putting high end bulls in our bull pen and she has another dandy one at her side this spring (really hoping she has a heifer next year). A correct well balanced bull with a good quarter and a thick hair coat. His heifer calves should be keepers. Again calving and performance EPD's are above average, to go with a close to breed average milk EPD.



Sire: RJY Chrome 6B

**LOT
23****More's Handyman 19H**

Polled Percentage MEM 19H BPRS1314753 Feb 12, 2020

W/C LOCK DOWN 206Z
 sire **WS STEPPING STONE B44**
 WS MS UPGRADE Z15

MR CCF VISION
 dam **MORE'S MS ECHO 705E**
 MORE'S MS ZELDA 201Z

REMINGTON LOCK N LOAD 54U
 G C F MISS NEW LEVELR206
 MR NLC UPGRADE U8676
 WS MS TEMPTING N152
 MR NLC UPGRADE U8676
 GCF MISS ELSA
 HOOKS SHEAR FORCE 38K
 MORE'S MS SUGARLAND 619S



BW	AWW	AYW	CE	BW	WW	YW	Milk	MCE	MWWT
101	941	1455	11.3	1.7	88.8	138.3	29.5	4.4	73.9

HOMO POLLED BY PARENTAGE/HOMO BLACK A moderate framed 7/8 percentage bull who is our youngest bull in the pen. His maternal and performance EPD's are all well above average. He is a soggy put together bull with a good spring of rib and a deep full quarter. His maternal brother was one of the high sellers in last years sale going to Coady Dehr, Biggar, SK. His sire, Stepping Stone is known to leave good udders on his offspring so 19H should follow suit.



Sire: WS Stepping Stone

DOWNHILL SIMMENTALS

Everett Olson

Box 1939, Minnedosa, Manitoba R0J 1E0
 204-826-2643 or 204-867-0076
 everettolson@mymts.net

Welcome to the 2021 edition of the Rebels of the West sale. After a long drawn out 2020 that we thought would never end here is hoping we can get back to normal sometime in 2021. The Ag sector is one that has flourished during these times with excellent grain prices and really good calf prices considering the price of feed grains now. This year the first calves off my exciting \$35,000.00 herdsire, Wheatland Frontrunner 896F, sell and they are worth definite consideration. New for this year the sale will be held at our sale partners, Horner Cattle Company's bull yard and we would like to thank Laura, Jake and Allan for the hospitality. As you all know I am located in the scenic Rapid City valley and the coffee is always on and I encourage everyone to come to the farm beforehand to have a look at the bulls. Thanks for your interest in my program.



Sire: Wheatland Front Runner 896F

HOMO POLLED BY PARENTAGE HETERO BLACK Here is a very correct, well made Front Runner son. These calves are small headed, wide topped, with excellent muscle development and correctness. This guy catches your eye as soon as you walk in the pen. You have to admire the way he gets out and walks and like all Front Runners, he has a beautiful hair coat. He had a modest 90 pound birthweight and an admirable 830 pound weaning weight this is a calf that will have many friends sale day.

LOT
24

Polled Purebred

DHS 35H

DHS Runrunner 35H
 BPG1330127 Feb 03, 2020

CLT ALLIANCE 91C
 sire WHEATLAND FRONT RUNNER 896F
 WHEATLAND LADY 6554D

W/C LOADED UP 1119Y
 dam MAR MAC GR OLLIE 142F
 CDP OLLIE

WS PILGRIM H182U
 BROOKS SHINIA 1A
 WHEATLAND CIRCUIT BREAKER
 WHEATLAND LADY 4242B
 REMINGTON LOCK N LOAD 54U
 AUBREYS BLACK BLAZE III
 RKTS ALLIANCE 2Y
 CDP OLGA 5A

BW	Oct20	AYW	CE	BW	WW	YW	Milk	MCE	MWWT
90	830	-	11.6	1.9	74.4	105.6	21.5	7.2	58.7



**LOT
25**

Polled Purebred DHS 32H PG1329961 Jan 24, 2020

DHS Frontline 32H

CLT ALLIANCE 91C
sire WHEATLAND FRONT RUNNER 896F
WHEATLAND LADY 6554D

WS PILGRIM H182U
BROOKS SHINIA 1A
WHEATLAND CIRCUIT BREAKER
WHEATLAND LADY 4242B
KUNTZ SHERIFF 8A
IPU 56U MS. RED LINER 81A
MR HOC BROKER
LFE KJLI DREAMLADY 79W

BW	Oct20	AYW	CE	BW	WW	YW	Milk	MCE	MWWT
81	820	-	12.0	0.1	71.4	981	20.5	4.7	56.2

IPU RED DEPUTY 25C
dam MAF DREAMLADY 52F
MAF DREAMLADY 16B

HOMO POLLED The Front Runner calves are like peas in a pod. This dark red, calving ease prospect is one that can go in the heifer pen with confidence. Once again a small head and made just right for calving ease out of a beauty of a Red Deputy daughter that did things right on her first calf. A very acceptable 81 pound birthweight and weaning off at 820 pounds you will put on a lot of miles on your truck looking for a heifer pen bull with the eye appeal of this guy.

**LOT
26**

Polled Purebred DHS 27H PG1329962 Jan 19, 2020

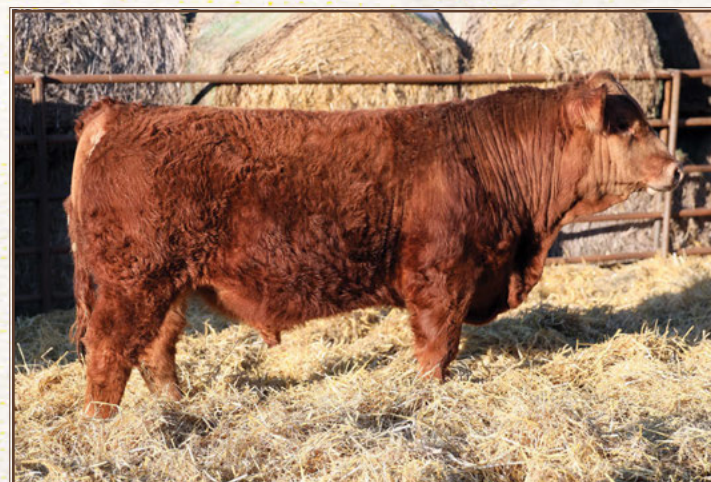
DHS Frontrunner 27H

CLT ALLIANCE 91C
sire WHEATLAND FRONT RUNNER 896F
WHEATLAND LADY 6554D

WS PILGRIM H182U
BROOKS SHINIA 1A
WHEATLAND CIRCUIT BREAKER
WHEATLAND LADY 4242B
MRL CAPONE 130B
MRL MISS 2448Z
NAC PETE 18Y
MILESTONE RL KAREN 100M

MRL HITMAN 12D
dam DHS MS HITMAN 16F
CREST'S VIEW 46C

BW	Oct20	AYW	CE	BW	WW	YW	Milk	MCE	MWWT
91	905	-	11.2	1.9	77.4	107.6	26.4	6.4	65.1



HOMO POLLED Here again another excellent haired, long spined calf. So many options with these Front Runner sons whether it be for calving ease in the heifer pen or to go onto cows to tame birthweight down and still have good performance in their calves. Coming into the world at 90 pounds and weaning off at 905 pounds this is what we want our steers to do in the fall.



**LOT
27**

Polled Purebred DHS 21H BPG1329952 Jan 15, 2020

DHS Frontrunner 21H

CCLT ALLIANCE 91C
sire **WHEATLAND FRONT RUNNER 896F**
WHEATLAND LADY 6554D

MRL MISSILE 138C
dam **DHS MS BARBIE 3F**
BDM BARBIE DOLL 301T

WS PILGRIM H182U
BROOKS SHINIA 1A
WHEATLAND CIRCUIT BREAKER
WHEATLAND LADY 4242B
COME AS U R RED ROCKET
MRL MISS 2423Z
WHEATLAND BULL 459P
BROKEN OAK LUCY 301R

BW	Oct20	AYW	CE	BW	WW	YW	Milk	MCE	MWWT
84	885	-	10.8	1.7	80.4	110.1	23.1	5.5	63.3

HETERO POLLED/HETERO BLACK Here is a stout hairy Front Runner son with tremendous hip and quarter. Starting at 84 pounds and weaning off at 885 pounds this guy will sire steers that will push the scale down in the fall.



**LOT
28**

Polled Purebred DHS 19H PG1329950 Jan 13, 2020

DHS Hostage 19H

MRL MISSILE 138C
sire **MRL HEAT SEEKER 109E**
TSN MS EDITION 55W

KWA ROCK 78Z
dam **RAINALTA LETA ROCK 8C**
RAINALTA LETA ACE 10X

COME AS U R RED ROCKET
MRL MISS 2423Z
TH BLACK EDITION 8R
MRL MISS 899S
KWA RED ROCK 5T
TLRS SASHA
WHEATLAND RED ACE 747T
RAINALTA LASS 107S

BW	Oct20	AYW	CE	BW	WW	YW	Milk	MCE	MWWT
100	1060	-	6.7	4.7	95.2	136.1	25.7	4.7	73.3

HOMO POLLED Here is the first of the performance bulls I have on offer. Huge middle, big topped and huge nutted. Weaning off a 1060 pounds, this guy is gonna add punch to his calves. Out of a big barreled, excellent uddered, Rock female who has done a great job again, as this guys maternal brother was my high seller last year going to Janzen Ranches in AB. A calf that is in the top 2% for weaning weight and 10% for yearling weight this guy will be popular sale day.

**LOT
29**

Polled Purebred DHS 22H PG1329953 Jan 16, 2020

DHS Sterling 22H

Sire SVS CAPTAIN MORGAN 11Z
NUG STERLING 208F
 AJE/JF ANT JOYS ELEGANCE

Dam MRL CRIME SCENE 100C
DHS MS ROSEBUD 34E
 ACS ROSEBUD 41X

HARVIE JDF WALLBANGER111X
 SUNNYVALLEY BLK JENNA 88U
 3C MACHO M450 BZ
 BHS JF ANTOINETTES JOY
 MRL DISCOVERY 21A
 MRL MISS 396X
 WHEATLAND RED ACE 747T
 ACS BLACK ROSEBUD 714T



BW	Oct20	AYW	CE	BW	WW	YW	Milk	MCE	MWWT
97	920	-	7.6	4.7	80.6	122.4	26.4	5.5	66.7

HOMO POLLED BY PARENTAGE An extremely long bodied very stylish bull out of the NUG Sterling bull that I own jointly with X-T Simmentals. The eye appeal and length will catch your eye as soon as you see him.

**LOT
30**

Polled Purebred DHS 3H BPG1301407 Jan 04, 2020

DHS Heatseeker 3H

Sire MRL MISSILE 138C
MRL HEAT SEEKER 109E
 TSN MS EDITION 55W

Dam LFE BUNDI 300X
LFE BS SPIKE 654Z
 LFE SPIKE 19M

COME AS U R RED ROCKET
 MRL MISS 2423Z
 TH BLACK EDITION 8R
 MRL MISS 899S
 MR NLC SUPERIOR S6018
 LFE DAKOTA COAL 64P
 3C FULL FIGURES C288 BLK
 LFE SPIKE 6K



BW	Oct20	AYW	CE	BW	WW	YW	Milk	MCE	MWWT
97	1020	-	5.9	3.9	83.6	114.8	21.8	3.1	63.6

HOMO POLLED BY PARENTAGE These Heatseeker sons come with vigour and a pile of grow to them. His 9 year old Bundi dam has raised good bull calves over the years going to Corrie Martens and David Ives plus a very good heifer that sold to Mar Mac Farms a couple years back.

**LOT
31**

Polled Purebred DHS 1H BPG1301404 Jan 01, 2020

DHS Pandemic 1H

Sire MRL MISSILE 138C
MRL HEAT SEEKER 109E
 TSN MS EDITION 55W

Dam NAC PETE 18Y
CREST'S VIEW 46C
 MILESTONE RL KAREN 100M

COME AS U R RED ROCKET
 MRL MISS 2423Z
 TH BLACK EDITION 8R
 MRL MISS 899S
 SPRINGCREEK RASHAD 12W
 NAC 88U
 MV RED LIGHT 406
 MILESTONE MISS RS 106K



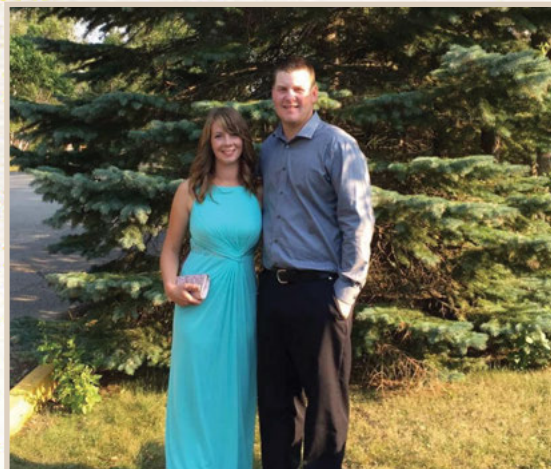
BW	Oct20	AYW	CE	BW	WW	YW	Milk	MCE	MWWT
90	1000	-	6.9	4.2	79.5	117.6	28.5	4.7	68.3

HETERO BLACK Another powerful Heatseeker son that weaned off at a 1000 pounds and has kept looking the part all winter. The Heatseekers are as long as you can make them and that translates into pounds. Don't miss out here cowboys.

HORNER CATTLE COMPANY

Laura Horner & Jake Rawluk
Alan Horner

Box 42 RR 1, Minnedosa, Manitoba R0J 1E0
 P: 204-868-5335 hornercattlecompany@gmail.com



Welcome to the 2021 edition of Rebels of the West bull sale!

What a wild ride 2020 has been and upon reflection I'm so proud of the strength and resilience that the people of the Ag sector have displayed. Come hell or high water (literally in the Minnedosa/Rapid City/ Rivers area) we are in it for the long run!

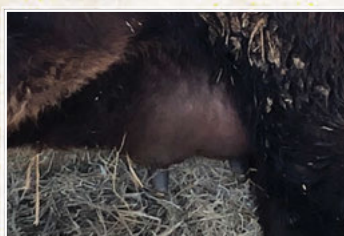
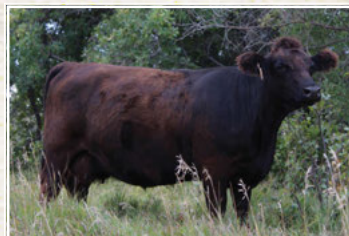
Who would have thought it would come to this, but we are proud to be bringing the Rebels of the West Bull sale to the Horner Cattle Company bull yard in Minnedosa. Bulls will be on display in our yard on road 107W north of the main farm yard just off #10 highway. We welcome everyone to come view the entire offering from all consignors on what would normally be "Rebels Weekend" March 12-14 with sale day being held on Sunday March 14.

Public health precautions will be taken upon visitation, we also welcome buyers to come have a look prior to sale weekend! Videos and photos will be available.

We are proud of our set of bulls this year, and being in such a young state in our program, we are rapidly growing and every year and are working towards building more of the product we strive to produce in more quantity and consistency. It certainly doesn't happen overnight, but we are proud of our journey and the steps we have taken to reach our goals.

This year with a few more numbers in the bull pen, we were able to grow our bulls on a balanced silage based TMR ration and worked closely with Doug Allision to develop the bulls the way we believe will maximize their longevity and athleticism making them a longer term investment for our customers.

We'd like to take the opportunity thank our past bull buyers and purebred and commercial female buyers for their confidence in our program. We hope for the opportunity to grow with you and help fulfill your bull and female needs for years to come!



Dam: Double Bar D CM 470E

Udder of Dam: 470E

LOT
32

HFL Bond 007H
 Polled Purebred HFL 007H BPG1312076 Jan 05, 2020

WS PILGRIM H182U
 sire **CCLT ALLIANCE 91C**
 BROOKS SHINIA 1A

SVS CAPTAIN MORGAN 11Z
 dam **DOUBLE BAR D CM 470E**
 SS/PRS JEWEL Y9S1

CNS DREAM ON L186
 WS MARLA 276M
 BB BARACK 1017T
 BROOKS RED HOT Y17
 HARVIE JDF WALLBANGER111X
 SUNNYVALLEY BLK JENNA 88U
 BMR EXPLORER
 EKHC RED JEWEL 760

BW	Sep9	AYW	CE	BW	WW	YW	Milk	MCE	MWWT
90	815	-	7.4	3.9	80.0	109.4	18.1	2.8	58.1

Here is a calf we admire for his sheer power! Big barrelled, wide topped, big butted, full of red meat with an excellent mother who raised him. We expect him to add some punch to his calf crop.

We purchased his mother in the fall of 2018 and she has done an incredible job for us. Her first daughter is an excellent uddered and heavy milking bankroll daughter. She is nursing an excellent Bounty Hunter heifer, while 007's dam herself is working on a powerful Heatseeker bull calf who we expect will be a hot commodity come next bull sale season! Another cow family where udder quality and foot quality is bred deeply.



We think incredibly highly of this guy and given his pedigree there is absolutely no guess work! His dam Jackson Rose 23D is well on her way to being a legendary donor. She never misses! Maternal siblings are milking now and they are powerhouses in terms of production and udder quality and sons have been dominant herdsires. On the sire side of things we've used Absolute for years, his progeny flat out work and we feel he's one of the most underrated Simmental bulls of all time, plus with his semen now off the market a son is your next best bet. We have 3 full siblings resulting from this flush and they are all outstanding. Paired along with great performance and calving ease numbers, this guy will take your herd to the next level.

LOT 33

HFL Sure Bet 015H

Polled Purebred HFL 015H BPTG1312113 Jan 17, 2020

BW	Sep9	AYW	CE	BW	WW	YW	Milk	MCE	MWWT
82	850	-	9.4	2.7	81.0	126.4	20.8	2.2	61.3

sire LFE STRAIT UP 454W
WFL ABSOLUTE 51Y
 WFL MS BLACK FLASH 8068U

dam SVS CAPTAIN MORGAN 11Z
JACKSON ROSE 23D
 SPRINGCREEK LINNE 33R

LFE MR LEWIS 514N
 LFE RS AMBER 216T
 R PLUS BLACKEDGE
 WFL MS RED FLASH 136P
 HARVIE JDF WALLBANGER111X
 SUNNYVALLEY BLK JENNA 88U
 RCC/TCF LINE DRIVE M181
 SPRINGCREEK JOSIE 58N



Dam: Jackson Rose 23D



Flushmate: Retained at Horner Cattle



Maternal Brother



Maternal Sister



Dam: Jackson Rose 23D at CWA



Full Sibling born in 2018

LOT 34

HFL Alliance 020H

Polled Purebred HFL 020H Applied For Jan 21, 2020

sire WS PILGRIM H182U
CCLT ALLIANCE 91C
 BROOKS SHINIA 1A

TNT POWER SURGE T404

dam MRL MISS 390X
 MRL MISS 332T

CNS DREAM ON L186
 WS MARLA 276M
 BB BARACK 1017T
 BROOKS RED HOT Y17
 TNT GUNNER N208
 GSR MS JOKER 113L
 TH BLACK EDITION 8R
 MRL MISS 301M

BW	Sep9	AYW	CE	BW	WW	YW	Milk	MCE	MWWT
84	755	-	6.1	4.0	73.6	93.5	26.3	1.9	63.1

An embryo bull calf off the MRL 390X donor who has built herself quite the resume throughout her years of production with over 25 registered progeny. 020H came into the world with a moderate 84lb birth weight and has developed to be an incredibly hairy and soggy made individual who will no doubt have the athleticism required to service a group of cows.



Dam: MRL Miss 390X



**LOT
35**

HFL Captain Morgan 011H

Polled Percentage HFL 011H BPRS1321064 Jan 11, 2020

BW	Sep9	AYW	CE	BW	WW	YW	Milk	MCE	MWWT
100	830	-	8.9	2.8	76.1	117.5	23.2	4.6	61.3

sire HARVIE JDF WALLBANGER111X
SVS CAPTAIN MORGAN 11Z
 SUNNYVALLEY BLK JENNA 88U

 dam DHS STRAIGHT FLUSH 18B
HFL MISS STRAIGHT FLUSH 723E
 ANGUS

SHS ENTICER P1B
 JDF PEPSI 61U
 RLA REDSTREAM 152S
 WLB 32H JENNA 360R
 DRAKE POKER FACE 2X
 MAR MAC TIARRA 160T

This guy has been a pen favourite since day 1 and has exhibited early maturity and masculinity from a young age. A Captain Morgan son that we really appreciate for his overall balance and completeness. A blend of power and elegance, with the ability to get out and really move effortlessly. 011H is big ribbed, big quartered, super long spined and full of red meat. He is smooth shouldered and jointed while standing on a well constructed hoof.

Proud made, we love the front third on this bull. 011H carries his head and neck high off his shoulder and stands strong in true herd bull character.

His Poker face influenced dam is one of the hardest working young cows in the Horner herd and looks great while doing it too. She's heavy milking while still exhibiting excellent udder quality and bringing home a calf nearly her size year after year and rebreeding within her first cycle.



Maternal Sibling Sold to Griffin Zalluski

**LOT
36**

HFL Captain Morgan 099H

Polled Percentage HFL 099H BPRS1339491 Mar 02, 2020

BW	Sep9	AYW	CE	BW	WW	YW	Milk	MCE	MWWT
86	790	-	9.1	2.9	78.0	122.5	22.5	4.0	61.5

sire HARVIE JDF WALLBANGER111X
SVS CAPTAIN MORGAN 11Z
 SUNNYVALLEY BLK JENNA 88U

SHS ENTICER P1B
 JDF PEPSI 61U
 RLA REDSTREAM 152S
 WLB 32H JENNA 360R

dam S A V FINALL ANSWER 0035
ANGUS

Here is a pretty useful halfblood!

099H is wide based, big ribbed and athletically built. His dam, 10, and granddam, 14, have been model cows still working within the herd. They are both powerful cows built for longevity and still to this day have some of the best udders in the herd. 099H's daughters would make me pretty excited! Maternal Siblings have sold to Jagger Devloo, Griffin Zalluski and Berner Cattle.



Maternal Sibling

**LOT
37**

HFL Front Runner 040H

Polled Purebred HFL 040H PG1312137 Jan 31, 2020

BW	Sep9	AYW	CE	BW	WW	YW	Milk	MCE	MWWT
94	795	-	9.3	2.7	70.0	95.3	25.0	4.0	60.0

CCLT ALLIANCE 91C
sire **WHEATLAND FRONT RUNNER 896F**
WHEATLAND LADY 6554D

AJB BLUE CHECKERPLATE 17A
dam **AJB RED INSPIRATION 27C**
AJB LADY INSPIRED 368X

WS PILGRIM H182U
BROOKS SHINIA 1A
WHEATLAND CIRCUIT BREAKER
WHEATLAND LADY 4242B
LFE BS LEWIS 322U
BLCC MISS 196R
KIMLAKE INSPIRATION 90T
AJB MISS 124R 36T

We've been pretty pleased with the job Wheatland Fronrunner has done for us, we purchased one of the first exclusive semen packages and expect to see much more usage out of him! His progeny have been big scrotaled with woolly dark red hair coats, they've calved like a dream and develop to be smooth made, beautiful skulled and growthy individuals.

040H exemplifies the quality of the front runner cattle. He is strong and wide topped, freemoving and structurally very sound. Having the typical attractive Fronrunner skull and smooth shoulder set this guy would excel on a pen of heifers!

We purchased his blood red dam from AJB Livestock at Shades 2016 where she was a hot commodity, and since then has a son working within our red herd here at Horner Cattle Company, and a daughter that sold to Mader ranches in the 2019 edition of Shades of the Prairie.

**LOT
38**

HFL Front Runner 074H

Polled Purebred HFL 074H PG1312140 Feb 15, 2020

CCLT ALLIANCE 91C
sire **WHEATLAND FRONT RUNNER 896F**
WHEATLAND LADY 6554D

DOUBLE BAR D CAPTIVE 446C
dam **DOUBLE BAR D MISS C 450E**
JHSN MISS CROCKET 16B

WS PILGRIM H182U
BROOKS SHINIA 1A
WHEATLAND CIRCUIT BREAKER
WHEATLAND LADY 4242B
SVS CAPTAIN MORGAN 11Z
DOUBLE BAR D LASS 674X
SKORS CROCKET 63X
BAR J POWERKITTEN 16N

BW	Sep9	AYW	CE	BW	WW	YW	Milk	MCE	MWWT
82	755	-	10.3	2.6	78.0	111.9	25.1	5.7	64.1



Another one of those good Fronrunner calves that will specialize in calving ease. 074H patterns his brothers in a very similar way. A bull that would sire a pretty consistent calf crop if he were to run in a sire group with one of his brothers! Bonus, this guy has a touch of white on his face and has the potential to sire baldie calves. His dam herself is a beautiful and powerful brockle face cow, you can't make udders much better than hers! She is nursing an awesome baldie faced Epic bull calf!



Dam



Dam and 058H Summer 2020

**LOT
39**

HFL Leader 058H

Polled Percentage HFL 058H PRS1339490 Feb 10, 2020

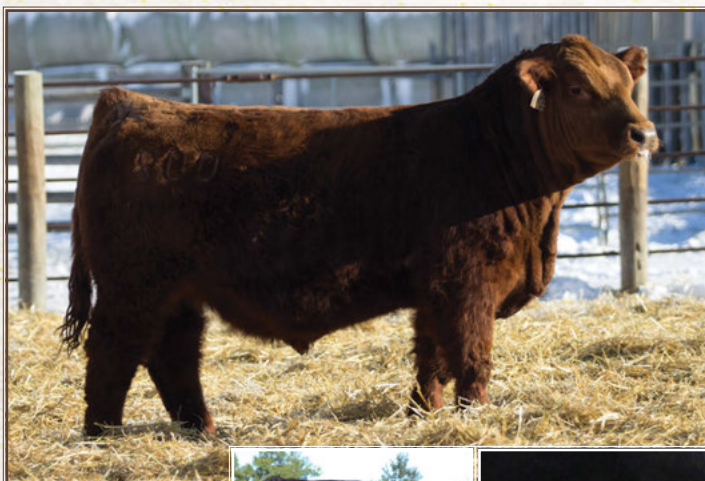
CCLT ALLIANCE 91C
sire **WHEATLAND FRONT RUNNER 896F**
WHEATLAND LADY 6554D

WS PILGRIM H182U
BROOKS SHINIA 1A
WHEATLAND CIRCUIT BREAKER
WHEATLAND LADY 4242B

BW	Sep9	AYW	CE	BW	WW	YW	Milk	MCE	MWWT
81	800	-	12.4	1.1	74.3	103.3	23.6	6.8	60.8

dam **SIMMENTAL**

The half blood division is strong and we truly believe they are the best of both worlds! This is a calf we just love and to us he doesn't do much wrong. He's attractive made with a dark red woolly hairy coat, long spined and strong topped, adequately muscled freemoving with a modest 81lb birthweight. 058H is a bull that we feel could be very useful in a variety of programs! He is mothered by a beautiful red blazed female going back to one of our most influential Red Angus herdsires McRae's Gunsmoke 106W who left a pile of daughters making up the backbone of our red program. A bull we are high on and would certainly utilize in our program!



**LOT
40**

Double Bar D HFL Bankroll 009H

Polled Purebred RLD 009H PG1345178 Jan 05, 2020

W/C LOADED UP 1119Y
sire **W/C BANKROLL 811D**
MISS WERNING KP 8543U

REMINGTON LOCK N LOAD 54U
AUBREYS BLACK BLAZE III
WAGR DREAM CATCHER 03R
MISS WERNING 534R
SVS CAPTAIN MORGAN 11Z
DOUBLE BAR D GEORGIA 486A
MR HOC BROKER
INDIAN RIVER SPIRIT

DOUBLE BAR D DEFENDER 611C
dam **DOUBLE BAR D CHERRYBOMB 424F**
IRCC CHERRY BOMB 513C

BW	Sep9	AYW	CE	BW	WW	YW	Milk	MCE	MWWT
73	730	-	9.8	2.7	75.7	104.9	27.5	6.0	65.3

A really well made cherry red Bankroll son that we expect to excel in the heifer pen. Sound from the ground up, attractive and smooth made with adequate muscle expression and rib shape. In the fall of 2018 we partnered up on his excellent dam when she was just a heifer calf with our friends at Double Bar D. We admired her for her structural integrity, excellent foot quality and extra extension and length of spine, along with being the daughter of the \$28,000 IRCC Cherry Bomb 513C donor. In the summer of 2019 009H's dam was selected as the All Breeds Jackpot Champion at her only outing at Harding State Fair. Udder quality is bred deeply in this cow family and you would be hard pressed to find a female of any breed with better udder quality. 009H's daughters will be highly desirable! Co-owned with Double Bar D.



Dam: Double Bar D Cherrybomb 424F



Udder of dam 424F



Dam: Mar Mac Cassidy 19F

LOT 41

LHCC Stunner 003H

Purebred Angus LHCC 003H 2169174 Jan 05, 2020

LD CAPITALIST 316
sire **MUSGRAVE 316 STUNNER**
MCATL BLACKBIRD 831-1378

MOHNEN PULSE 533
dam **MAR MAC CASSIDY 19F**
MAR MAC CASSIDY 31D

CONNEALY CAPITALIST 028
LD DIXIE ERICA 2053
MCATL PURE PRODUCT 903-55
MCATL BLACKBIRD 1378-573
MOHNEN HEARTRATE 1751
MOHNEN JILT 2360
MAR MAC BLACK RIDGE 15B
MAR MAC CASSIDY 27Z

BW	Sep9	AYW	BW	WW	YW	Milk	CE	MCE
79	815	-	0.4	58	106	27	6.5	7.5

Built right from the ground up, 003H exhibits superior growth, testicular development, depth of heel while being tied into an attractive calving ease package. 003H's dam was purchased as the high selling angus heifer calf in Mar Mac's New Generation female sale. That day we really appreciated her incredible rib shape, wide base, depth of body and overall power and capacity, since then she has developed superior udder quality and is as easy fleshing as they come. 003H was her first kick at the cat and we think she knocked it out of the park. His dam is working on a SAV Renovation bull calf in 2021, we have high hopes for him! Horner Cattle Company reserves the right to in herd semen usage on this excellent young bull.

LOT 42

SHCC International 035H

Purebred Angus SEAN 035H 2185912 Jan 26, 2020

S A V INTERNATIONAL 2020
sire **DMM INTERNATIONAL 54D**
DMM BLACKBIRD 105A

SITZ UPWARD 307R
dam **S7R 307R ZEST 14Z**
BxB MISS VENTURE 118L

S A V HARVESTOR 0338
S A V EMBLYNETTE 5483
GUMBO GULCH CREED 94S
SOUTHERN OX BLACKBIRD 12J
CONNEALY ONWARD
SITZ HENRIETTA PRIDE 81M
V F VENTURE FORWARD
BxB MISS EXT 100J

BW	Sep9	AYW	BW	WW	YW	Milk	CE	MCE
95	710	-	3.9	55	95	29	0.0	4.5



Granddam and sire:
DMM Blackbird 105A



Sire: DMM International 54D

If you're a big believer in cow families, have a look here! This guy comes from Canada's very best!

035H himself is extreme! Extreme neck extension, length of spine, and would be a frame score larger than many angus bulls. He's attractive skulled, smooth shouldered, good footed, adequately muscled and built on a foundation of excellent structure. All of this has translated to serious pounds.

Because of these attributes 035H would excel in a situation where added extension and a boost in frame score is needed on more moderate framed cows. His sire DMM International 54D took CWA by storm not once but 3 times, where he reigned supreme at side of his dam Blackbird 105A, himself as 2 year old, and again this last fall being voted peoples choice out of all supreme champions. Maternal siblings have sold to Griffin Zalluski and Brody Slykhuis of Hilltop Cattle.

DOWNEY FARM

Allan and Jacquie; Ryan, Kyle and Beverley-Jean

General Delivery, Coulter, Manitoba R0M 0G0

ajdowney@xplornet.com

P: 204-649-2260 Ryan: 204-522-0838 Jacquie & Allan: 204-761-8207

Firstly we would like to welcome you to this year's Rebels of the West Bull Sale. Once again we would like to thank the Rebels group for allowing us to market our bulls through the sale. Everyone has thought this and said it, but what a year the last has been, but it will get better sooner or later. The sale format has changed due to Covid-19 this year, but what hasn't is the quality of bulls assembled for your consideration. New this year is of course the sale location, where it will be held at Horner's near Minnedosa. All the sale bulls will be there the Friday and Saturday and sale day Sunday where they can be viewed at any time. With Covid-19 rules and regulations in place, we understand that things must be done with each other's safety and health in mind. With that we strongly urge you to please visit our bullpen before the sale. As well ourselves along with More Bros. Simmentals will be having our bulls on display at Virden Heartland Auction Mart on Friday, March 5th, 2021 for the day. Feel free to drop by or arrange a meeting time. With that, we would like to thank all those who have supported our program through the years. We make our living on the cattle, and it's you folks that make it all possible for us. Thank -you! We know that this year will be different, but we do hope to make this bull season as safe and beneficiary for you as possible.



Going to lead off with the heavyweight in our pen, this bulldozer of a "Stubby" son. Downey 19H has just always had that herd bull look to him from day one, great top, deep middle, and as gentle as a puppy dog. I think the biggest positive of this bull is his dam Downey Ms 161Y. Every year whether it be a bull or female, it's always one of our best. Her first and only son prior to this guy was the first bull we sold to long time customer Andrew Routledge. They let that bull go last spring for the simple fact they had too many calves off him. Not a bad problem to have. This bull should go out and do the same; no going wrong here folks!

**LOT
43**

Downey 19H

Polled Purebred DYAL 19H BPG1337853 Jan 09, 2020

sire R PLUS BLACKEDGE
LFE BS LEWIS 322U
LFE BS MS ARNOLD 135S

dam DOWNEY 13W
DOWNEY MISS 161Y
MRL MISS 351T

LAZY S BLACK 29N
SUN STAR MISS DRIVE
LFE BOMBSHELL 508N
LFE MISS ARNOLD 90P
TH BLACK EDITION 8R
SGCC BLK ROSEANNE 13S
BAR CK VISION 227P
WFL BLACK LADY 505H

BW	Oct 21	Jan 1	CE	BW	WW	YW	Milk	MCE	MWWT
93	1025	1330	7.3	4.1	68.9	94.4	17.7	0.1	52.2



Downey 51H is the third calf of Downey 202A that has come through "Rebels" and like the others, may just be my pick of our bulls. A correctly made power bull with a Top 30% WW EPD and 25% YW EPD. This Broker son is easy to like with his big middle, proud head and front, and his great hair coat. He's a smooth shouldered bull, with a Boa Constrictor like back, acceptable thickness, and strong foundation. Downey 202A is one of our best and most consistent cows. Her sons have been our high sellers, and we have retained a son (DYAL Waldo II 728E) who bred exceptionally well. We have a lot of confidence in this bull and in what he will end up doing at his new home. His steers will be easy fleshing with some jam and style, and he should leave you fantastic females.

LOT 44

Downey 51H

Polled Purebred DYAL 51H BPG1337890 Jan 29, 2020

Sire SVF STEEL FORCE S701
MR HOC BROKER
JM BF H25

Dam DOWNEY 505W
DOWNEY MISS MURRAY 202
MRL MISS 654U

CNS DREAM ON L186
SVF SHEZA BEAUTY L901
G&L BLACKFOOT 716D
YC MISS BIK B80
REMINGTON ON TARGET 2S
WFL BLACK LADY 505H
TNT ON STAR S312
MISS R PLUS 5074R

BW	Oct 21	Jan 1	CE	BW	WW	YW	Milk	MCE	MWWT
100	950	1260	2.9	5.9	80.2	117.3	21.4	1.4	61.5



Here's a black bull that's bound to make some attention on sale day. Easy to look at, great on the move, and a stacked pedigree. Downey 68H is a son of MRL 98E, a Black Edition son we purchased to use on females and cows. We've just calved out the older sisters to 68H and not only were they great, they were Black Edition great! We've always been big Edition lovers just because the progeny are good honest cattle, that compliment what many are wanting today. Easy calving, with big bodies, easy fleshing and acceptable performance. This guy's mother is no slouch either. Downey Ms 540C is a beautiful red cow with a perfect udder and goes back to a great cow family from the prestigious Lewis program. We have a half sister to 68H who is one of our best young cows. At the moment she's got a hell of a TNT Knock Out bull calf, one to mark for next year. When the points add up, it's really easy to fall in love with this bull.

LOT 45

Downey 68H

Polled Purebred DYAL 68H BPG1344721 Feb 11, 2020

Sire TH BLACK EDITION 8R
MRL 98E
MRL MISS 4368B

Dam TLSS ARGO 131A
DOWNEY MS 540C
LFE RS DAKOTA COAL 44X

TNT DYNAMITE BLACK L137
BBN MS BLACK LADY 28H
MRL EL TIGRE 52Z
MRL MISS 799W
THSF FREEDOM 300N
TLSS FLIRTIN WITH FIRE 3X
LFE DREAMING RED 503S
LFE RS DAKOTA COAL 128T

BW	Oct 21	Jan 1	CE	BW	WW	YW	Milk	MCE	MWWT
90	880	1230	7.9	2.4	74.0	108.3	23.2	4.5	60.2



**LOT
46**

Downey 9112G
Polled Purebred DYAL 9112G BPG1337399 Dec 28, 2019

TNT STANDOUT N266
sire TNT KNOCK OUT R206
OPPS WIS GM2

HART ALL IN W382
dam DOWNEY MS. 607D
MRL MISS 394T

RC STINGER 072K
KAPPES ONE STOP H70
LRS PREFERRED STOCK 370C
OPPS EXTRABLK BLAZE Y024
SAS T101 SWEET MEAT
HART LADY LOCATOR P325
TH BLACK EDITION 8R
MRL MISS 429N

BW	Oct 21	Jan 1	CE	BW	WW	YW	Milk	MCE	MWWT
93	1000	1306	6.5	3.6	79.5	115.3	19.9	0.8	59.7

One of those moments where you wish the bulls were a bit more wild, might help them pose a bit better! Downey 9112G is a bull that looks so much better in person. He is a more moderate frame bull than our other bulls, but is as heavy as the other's, and it's easy to see why. Nice big top, lots of middle, and tons of meat and muscle on this stout tank. What makes this guy a bit more neat, is his cool old pedigree. An own son of the TNT Knock Out bull, who is still highly noticeable today, and backed by probably our best young cow from our best cow family. She raised what we felt was our best black bull last year. A maternal sister to this guy, has an awesome black baldy bull calf sired by the \$100,000 Crossroad Connected to consider for next year.



**LOT
47**

Downey 9115G
Polled Purebred DYAL 9115G PG1345259 Dec 30, 2019

TH BLACK EDITION 8R
sire MRL 98E
MRL MISS 4368B

KWA INTEGRITY 203B
dam DOWNEY MS 593D
DOWNEY MS 446B

TNT DYNAMITE BLACK L137
BBN MS BLACK LADY 28H
MRL EL TIGRE 52Z
MRL MISS 799W
MRL INTEGRITY 76Y
ANKONY MS DAUMES R82
DOWNEY 107Y
MRL MISS 441T

BW	Oct 21	Jan 1	CE	BW	WW	YW	Milk	MCE	MWWT
93	1000	1300	7.6	2.8	71.8	106.4	22.1	4.5	58.0

An end December born red bull that looks better in the flesh than what he does in any of his pictures. We have three MRL 98E sons on offer, and they are extremely similar; square, thick, big butted bulls that are super sound made bulls. This guy will be just a good versatile herd sire. Should calve awfully well, with that get up and grow type.



**LOT
48**

Downey 37H
Polled Purebred DYAL 37H PG1337875 Jan 18, 2020

BEL C&B WESTERN 2ND
sire BGS WESTERN RED 61C
MISS CAMP ZELLA 7Z

WESTFALL VOYAGER 721P
dam DOWNEY MISS VOYAGER 224 Z
TWIN BRAE BLACK LICORICE

SIM-ROC C&B WESTERN
ADRIAN
SIM-ROC PREMIER
MISS CAMP 12W
SVJ POWER SURGE
DRAKE SUMMER SISTER
DANA WHEAT KING 46U
TWIN BRAE MS NOSY

BW	Oct 21	Jan 1	CE	BW	WW	YW	Milk	MCE	MWWT
93	935	1160	7.9	3.7	73.0	103.5	35.2	8.9	71.7

Here's a pretty neat white faced red bull. Downey 37H is sired by the Western Red bull that was a big name at the Woodsong Farm back in his day. He was noted for siring powerful steer calves and for making tremendous mother cows. The way this guy's mother is, I'd be thinking much the same of him. Just a FYI, this guy has white socks on his two back legs.



**LOT
49**

Downey 55H

Polled Purebred DYAL 55H PG1337895 Feb 01, 2020

sire **MRL 98E**
MRL MISS 4368B

STR KING ARTHUR N310
dam **HOMESTEAD-T MISS 309C**
HOMESTEAD-T MISS 125A

TNT DYNAMITE BLACK L137
BBN MS BLACK LADY 28H
MRL EL TIGRE 52Z
MRL MISS 799W
WLE EXCEL
JF MISS SELINA 812H
DOUBLE BAR D MEKA 7001T
RENDEZVOUS 28P

BW	Oct 21	Jan 1	CE	BW	WW	YW	Milk	MCE	MWWT
91	885	1170	8.2	3.6	77.3	110.5	25.1	5.1	63.8

Last but definitely not least, is this dark red rascal 98E son. Again hard to knock this guy, just because he's so easy to like. Well tempered, square, with a smooth front shoulder and nice small head. His mother is a female we bought from Homestead T Simmentals from the Pembina Triangle Sale a while back. She is a gorgeous female that has always calved the middle of February.



**LOT
50**

Downey 39H

Polled Purebred DYAL 39H PG1344720 Jan 21, 2020

NF DR. ATKINS P35F
sire **CDI/PLCC DR. PHIL 145U**
CDI MISS SHEAR FORCE 3N

DOWNEY 107Y
dam **DOWNEY MS 523C**
DOWNEY MISS 11T

WCS MR HOT ROD 210M
HSR F353C MISS ELEGANT
HOOKS SHEAR FORCE 38K
CDI MS FRANKIE 20L
SHS ENTICER P1B
LFE KATARINA 604N
BAR 5 SA STRIDE 413P
BLCC MISS 12P

BW	Oct 21	Jan 1	CE	BW	WW	YW	Milk	MCE	MWWT
95	1010	1200	3.2	4.9	76.9	105.6	25.7	0.0	64.1

Last year, the majority of our red bulls were sired by Dr. Phil, and this year we only have this powerhouse stud to show you. We had used Dr. Phil heavily for two years on our red cows. We were wanting a good dark red sire that would thicken up our calves, but not sacrifice the frame; we were more than happy with the results. We kept a Dr. Phil son last year for ourselves and had a handful of calves, and again, extremely pleased. If you are looking for a red blaze bull that will add some frame into your calves, I'd be suggesting this fella. As well, he's backed by a model cow. Excellent udder, great at getting re-bred, and easy to look after, cause she's so good at looking after herself. Make a note, neat bolt of white down his face, and two white socks as well.

TERMS AND CONDITIONS

The terms of the sale are cash or cheque payable at par at sale location unless satisfactory credit arrangements have been made prior to the sale. The right of property shall not pass until after settlement is made. First Class Cattle Marketing reserves the right to require a certified cheque as settlement before releasing any sale cattle. Should the purchaser fail to settle for his purchase, First Class Cattle Marketing reserves full power to resell the animal to the best advantage, either publicly or privately, without further notice. Any loss arising from such resale, together with keep and all other expenses shall be payable by the defaulter. All settlements must be made with the clerks of the sale before any cattle will be released. The owners, First Class Cattle Marketing and sale staff have the right to refuse bids from anyone who has a previous record of default in payment and/or who has not made prior credit arrangements prior to the sale with the owners and/or Sale Management.

BID Every animal consigned to the sale must be sold by auction. No by-bidding will be permitted. Each animal will be sold to the highest bidder.

DISPUTES In cases of disputes, bidding will be reopened between the parties involved. If no further bid is made, the buyer will be the person from whom the auctioneer accepted the last bid. The auctioneer's decision in such matters will be final.

PURCHASER'S RISK Each animal becomes the risk of the purchaser as soon as sold.

ANNOUNCEMENTS from the auction block will take precedence over printed matter in the catalogue. Buyers are therefore cautioned to pay attention to any such announcements.

CERTIFICATE OF REGISTRY The proper Registration of Recordation paper, as the case may be, will be duly transferred and furnished to the buyer for each animal after settlement has been made.

SHIPPING Assistance will be given in making shipment after the sale, but Sale Management or Seller assumes no risk. Expenses incurred are the responsibility of the purchaser. Purchasers are requested to furnish shipping instruction when making settlement.

GUARANTEE All animals will carry standard breeding guarantee as specified by the applicable Canadian breed Association. At no time shall the seller's liability exceed the purchased price of the animal.

EXCEPTION TO GUARANTEE In cases where the animal is subjected to any hormonal or surgical reproduction techniques after the sale, the guarantee shall be null and void. In the cases of bulls, they are guaranteed to breed naturally according to applicable Canadian breed Association guarantee, but no guarantee is given that semen from any bull will freeze.

HEALTH It is the buyer's responsibility to determine health requirements for importing any animal into his province or state. First Class Cattle Marketing assumes no responsibility for the health status of any animal in the sale.

ACCIDENTS Although every precaution will be taken to protect the safety and comfort of buyers, neither the Sale Management, auctioneer, or Association assumes any responsibility in this matter and disclaims any liability legal or otherwise in the event of accident or loss of property.

RIGHTS AND OBLIGATIONS The above terms and conditions of the sale shall constitute a contract between the buyer and the seller and be equally binding to both. Resale of animals following purchase in this sale shall constitute a separate transaction and the rights and the terms and conditions of this sale do not cover obligations of the two parties connected thereto.

FIRST CLASS CATTLE MARKETING LTD IS AGENT ONLY It is clearly understood that First Class Cattle Marketing acts only as agent between buyer and seller and is not in any way responsible for any failure by either party to live up to his or her obligations. First Class Cattle Marketing does not assume any financial obligations to collect or enforce collection of monies by either parties, and in exceptional case, any legal action will be between buyer and seller. First Class Cattle Marketing Ltd has no ownership of the facility and assumes no responsibility for the operation of said facility.



Thank you to our 2020 buyers

Gary Robbins**
 Rosehill Cattle Co
 Greg Rogasky
 Jim Fearnley
 Fairlane Farm**
 Morgan Mantik
 Craig Pearson**
 Sundance Valley Ranch**
 Sim-qua Ranch
 Andrew Routledge

Hilltop Cattle Co
 David Rhodes
 Gerry VanMacklebergh
 Playgreen Farms
 Ryan Kontzie
 Bouchard Livestock**
 David Moskal
 Dean Bluhm
 Dylan Desrochers**
 Bois D'Travers Farms

Sandy Hills Simmentals
 Randy Giesler
 Brian Yasieniuk
 Pederson Farms**
 George Farms
 Kenneth Stoop**
 Trevor Nolan
 Coady Dehr
 Lazy S Ranch
 Jim Lane

Rea Kinnard
 Barry Rosnagel
 Brad Bryant
 Stoney 28 Farms
 Janzen Ranches
 Davis Ives**
 Norman Underhill
 Clint Sigurdson
 Willow Tree Farms

**purchased multiple lots



First Class Cattle Marketing
Box 1740
Crossfield, Alberta Canada
T0M 0S0



REBELS OF THE WEST

2021