



*Second Annual*  
**MEADOW ACRES &  
SIMMENTALS**  
*Bull + Female Sale*

1 pm :: Wednesday, March 18, 2020 :: Meadow Acres Farm :: Lampman, Saskatchewan



## **Meadow Acres Bull Warranty Program**

We are pleased to offer a warranty program that is designed to help get your bull through the most critical first breeding season.

### **Duration- 6 months Rate- 5%**

This warranty covers injury, sickness or death. It does not include freezing semen. Mismanagement, injury or death due to malicious, willful or intentional acts or mistreatment by you or your employees are fraudulent claims. Contact us asap when you have a problem to ensure we can handle any issues in a timely manner. A vet report will be required for claim purposes. We will have a suitable replacement bull to your yard as soon as possible if required or a credit to next years sale. Credit Only no cash refunds. Amount will be based on settlement value less salvage if possible and will not be for more than settlement amount at time of purchase. Bulls that are not covered by this warranty option at the time of settlement will only be covered by the breed guarantee standards set by the Canadian Simmental Association.

We highly recommend that bulls that remain at the farm until a later date are covered with our warranty program or a third-party insurer. Alameda Agencies, Bonnie Thompson will be available on sale day to assist with all your insurance needs.

## **Volume & Repeat Customer Discounts**

- 2 bull 3%
- 3 bulls 4%
- 4 bulls 5%
- 5 or more bulls 6%

Discounts only apply to bulls that settlement is made on sale day. Absentee buyers have a 14-day grace period to make settlement and have discount apply. No bulls purchased in partnership with someone else are eligible for this program.

Repeat Customer Discount - 2%

## **Delivery**

Delivery will be provided in most cases right to you, or a central point within the prairie provinces and North Dakota & Montana. Other provinces and states we will coordinate delivery with you in the most cost effective and efficient manner possible.

## **Horned/Polled & Color Testing**

Not all polled and color test results on the heifers were received before going to print with the catalogue. Give us a call to inquire on any pending results. All updated results will be posted with sale supplement information prior to the sale.

## **US Exports**

We are happy to complete all required health paperwork and brokerage to get to your bulls across the line with no hassle. If you have questions regarding export, please contact us. The exchange rate will be announced from the block sale day. The dollar is very much in your buying favour.

## **Herd Health**

All animals sold are on a complete herd health protocol since birth. We work closely with our veterinarians to ensure our herd's health is optimized for our benefit and yours.

## **Semen Testing**

All bulls sold that are 12 months of age or more will be semen tested prior to the sale. All scores and information will be available as requested. Supplemental information will be available prior to sale day.

## **Semen Collection**

Meadow Acres Simmentals reserves the right to collect semen on any bull in the sale at the buyers convenience and our expense.

## Meadow Acres Simmentals



Box 164 Lampman, SK S0C 1N0  
meadowacres@signaldirect.ca

**Dustin, Kirsten, Brenna & Britt Fornwald**

H: 306.487.2557

Dustin: 306.487.7510 Kirsten: 306.487.7514

**Blair & Laurel Fornwald**

C: 306.487.7662

### Online Viewing & Bidding



Sarah Buchanan 306 681 5340

### Catalog Design by Bohrson Marketing

The information printed has been supplied by the seller and believe to be accurate. Updated sheets and announcements from the block will take precedence over any incorrect printed material.

### Sale Videos

Videos of all bulls and heifers will be available online at [www.dvauctions.com](http://www.dvauctions.com) or [www.meadowacressimmentals.com](http://www.meadowacressimmentals.com) before the end of February.

### Sight Unseen Program

We understand that it is never easy to get away and for some of our customers distance is now more of a factor than in the past. We know these cattle like the back of our hand and are confident we can select a bull that meets your specifications. Give us a call prior to sale day and we would be happy to go through the bulls with you and identify the right bulls for your operation. Contact Dustin or Kirsten to discuss. If you are not satisfied with your bull upon delivery, we will take the bull back and refund your money, no questions asked! We also have a professional team of sales consultants to assist you if you are not able to attend the sale that will help you find and buy the bull that is right for you.

### Schedule

March 17th-Bulls available for viewing

March 18th-10 a.m. bulls available for viewing

-11:30 am lunch

-1:00 pm Sale

We always welcome visitors, if you would like to come ahead of the sale, please let us know and we would be happy to show you through the bulls anytime!

### Pictures

Bull sale photos were taken December 30th & 31st.

### Sale Day Phones

Dustin Fornwald 306 487 7510

Kirsten Fornwald 306 487 7514

Blair Fornwald 306 487 7662

### Sales Management

Scott Bohrson, BMS 403 370 3010

Taylor Richards, BMS 306 821 4169

Martin Bohrson, BMS 306 539 6934

Darnell Fornwald, FCCM 403 795 8030

Jon Karsin, FCCM 204 870 0329

Shay Martindale, FCCM 780 812 4581

Marc Boisvert, French Consultant 819 314 0367

### Sales Staff

Col. Ryan Dorran, Auctioneer 403 507 6483

Mark Stock, Ringman 403 357 8104

Taylor Richards, Ringman 306 821 4169

Bonnie Thompson, Insurance 306 483 7311

### Hotel Accomodations

Ramada Carlyle 306 453 2686

Bear Claw Casino & Hotel 306 577 4577

Estevan Days Inn 306 634 6456

### Special Representation

Garth Rancier, CSA President

Randy Bollum, Simmental Country

### Terms & Conditions

Cattle will sell under the standard terms & conditions put forward from the breed association and Bohrson Marketing Services. These are available upon request.

### Accidents

Although every precaution will be taken to protect the safety and comfort of people in attendance, neither the Sales Management or Meadow Acres Simmentals assume any responsibility in this matter and disclaims any liability, legal or otherwise in the event of accidents or loss of property.

### Directions to Meadow Acres

**From Estevan** north on highway 47 turn east onto highway 361 we are 8 1/4 miles east of Lampman on the south side of the highway.

**From Carlyle** take highway 9 south to the 361 WEST junction towards Lampman. We are 12 3/4 miles west on the south side of the highway.

**From Northgate, ND** take highway 9 north turn east and then north on highway 9 again and take the 361 junction towards Lampman. We are 12 3/4 miles west on the south side of the highway.

# -- Welcome --

On behalf of our family, it is my pleasure to welcome you to our Second Annual Bull & Female Sale. We would like to thank our customers and friends that have supported our program over the last seven years. The trust and confidence you place in our program allows us to continue to be apart of the seedstock industry. It's an industry that we are proud to be a part of and raise our family in. It's the people that truly make it like no other! Over the last seven years of selling Simmental bulls, we continue to strive to produce bulls that are functional for commercial producers, that are built to last and help you improve your program and bottom line. We take this mission very seriously and work diligently to continually breed and raise better cattle. Our success is directly correlated to our customers productivity and progress.

We are excited about this set of bulls. We think that they offer something different in terms of pedigree than the current trends found in most sale catalogues. Two years ago, we stepped out and made a few major investments into our herd bull battery. Springcreek Launch, Crossroad Red Stone and KCCI Exclusive. This is the first set of progeny to sell from those exciting new sires. We have focused on the cows behind these bulls, as well as structural soundness and productivity. We have bulls that are going to suit many different needs for our customers, be it maternal, terminal or a nice mix of both. They are a group that is consistent in their type; sound, high quality beef bulls that are grown with the goal of going out and working for you. We are offering a few different things in this year's sale, including a couple of 2-year-old bulls, 12 commercial bred heifers and this will be our last set of Fall born bulls. The open replacement heifers are a strong set that offer some variety to suit different operations.

2019 was a year I think we'd likely be okay with forgetting. It was a tough one from start to finish and so widespread throughout North America. The bulls were weaned later than normal with the wet conditions, we figured they would be better off out on grass. They weaned well and have been excellent at feed conversion over the winter. We continue to utilize a high roughage based TMR ration to develop the bulls. It is a ration developed by a nutritionist and closely monitored to ensure ideal gain and longevity in these bulls.

We are pleased to offer a sight unseen program, as well as a repeat customer discount and volume discounts on multiple purchases. We will also continue to offer a no-nonsense warranty program on the bulls, please ensure you read through the sale information to learn more about it. The sight unseen program is one we would encourage you to utilize if you are not able to make it sale day. We know these cattle inside and out and would be happy to discuss them with you anytime and are also happy to bid on your behalf if you desire. We will ensure that the bulls you buy are right for what you are looking for and within your budget. We have a great sales staff enlisted that are familiar with the entire offering and are another resource available to help you in making your buying decisions and purchases on your behalf in a professional manner.

Our sale will be a video auction, no bulls will be run through a ring, so we invite you to come early to go through the offering in their display pens. We always encourage you to make it to the sale in person, but because we know life happens, the sale will be broadcast live and online bidding is available through DV Auctions. If you have any questions regarding the online platform or require assistance getting set up, please feel free to contact myself or Sarah Buchanan with DV Auctions. Videos of all animals will be available before the end of February on both [www.meadowacressimmentals.com](http://www.meadowacressimmentals.com) and our sale listing on [www.dvauctions.com](http://www.dvauctions.com).

Visitors to the farm are welcome anytime. We are proud of the offering and the cow herd behind them and would be happy to show you around. If you are not able to get to the farm but have inquiries, please feel free to give Dustin or myself a call to discuss the bulls or any details pertaining to the sale. Thank you in advance for your interest in our program and we look forward to seeing you on March 18th!

Sincerely,

*Kirsten Fornwald*



Meadow Acres has a set of bulls and females in this years offering that surely will stand out as they have risen to the top of impressive sale offerings the we have previewed. This program has become one of the most elite Simmental operations in Canada and their progressive approach to add the very best genetics is paying huge dividends for them. They have spared no expense to build an elite cowherd and mate them with the very best herd sires in the breed to produce an outstanding product for you, the valued customer.

In the spring of 2018, the Meadow Acres program made some progressive and wise breeding decisions as they toured throughout the continent sourcing the very best cattle they could find. They invested in three bulls that were great moves to accelerate their program forward and the results speak volumes with the offering in this years sale. Firstly, Launch 110E was the lead bull and high seller from Spring Creek Simmentals that is royally bred with the maternal legend 56U on the top side and the \$50,000 Brooke 68Z on the bottom who is a beautiful, productive donor female that is a potent breeding piece. The second investment in the spring of 2018 was Red Stone from Crossroad Farms who was the lead and a high seller from one of their never-miss, donor females that excels each year with a high seller. This red baldy bull is a true breeding piece that doesn't miss. Thirdly, they travelled to the Denver NWSS to view and secured what we feel was the best Simmental bull we've seen there in some time. The \$240,000 Exclusive is a twist on pedigree and has the stoutness, muscle, hair, presence and cow family that will excel in the Meadow Acres program and his first sons are impressive. Those three bulls have elevated this strong program and the AI bulls compliment them perfectly as there is outstanding progeny from many of the best AI bulls in the industry. There is a set of bulls that is surely to impress and one of the most consistent and high quality on offer this spring. Also on offer is top-end replacement females and commercial bred heifers that are built for profitability and are of top quality.

This strong set of sale cattle are backed by a highly productive cowherd that is the right kind to invest in. We encourage you to join us at Meadow Acres for their Second Annual Bull & Female Sale to take in a great lineup of cattle and awesome hospitality. If you can't make sale day, feel free to contact the Meadow Acres family or any of the sales staff to represent your needs in a confidential manner. We look forward to visiting with you in Lampman on March 18 for the Meadow Acres Second Annual Sale.

Best Regards,

*Scott Bohson*  
*Bohson Marketing Services*

Welcome to the 2nd Annual Meadow Acres Simmentals Bull & Female Sale. This year the Meadow Acres crew has brought you a very consistent set of bulls from front to back. Whether you are looking for red or black, calving ease or power, there really is a bull here for every Simmental enthusiast. The bulls on offer are stout, hairy, soft made and sound. They are fed and bred to last and are backed by a truly great set of mother cows. Meadow Acres has been using breed leading sires and females to raise their sale bulls since their start in the Simmental breed so please bid and buy with the upmost of confidence as the bulls are also guaranteed 100%.

On offer once again will also be a select group of open heifers. Many of these heifers have been selected right off the top of the open heifer pen and will please even the most critical of cattlemen. One walk through the cowherd at Meadow Acres will make you want to own every heifer on offer. They are functional, hairy, big middled females that have been fed with the entire heifer pen, so they are in the right shape to go out and breed to the bull you see fit to increase your return on investment. Many of these heifers are also the kind that you can stick a halter on and be very successful on the show road.

Please plan on joining us March 18th at the farm by Lampman Saskatchewan for the 2nd Annual Bull & Female Sale. The hospitality put on by the Meadow Acres team is truly second to none. If for any reason you are unable to make the sale give myself or anyone of the First Class team a call. It will be our pleasure to assist you in a professional and confidential manner in purchasing your next herd sire or female as we will be very familiar with the offering and cow herd. I hope to see you all in Lampman.

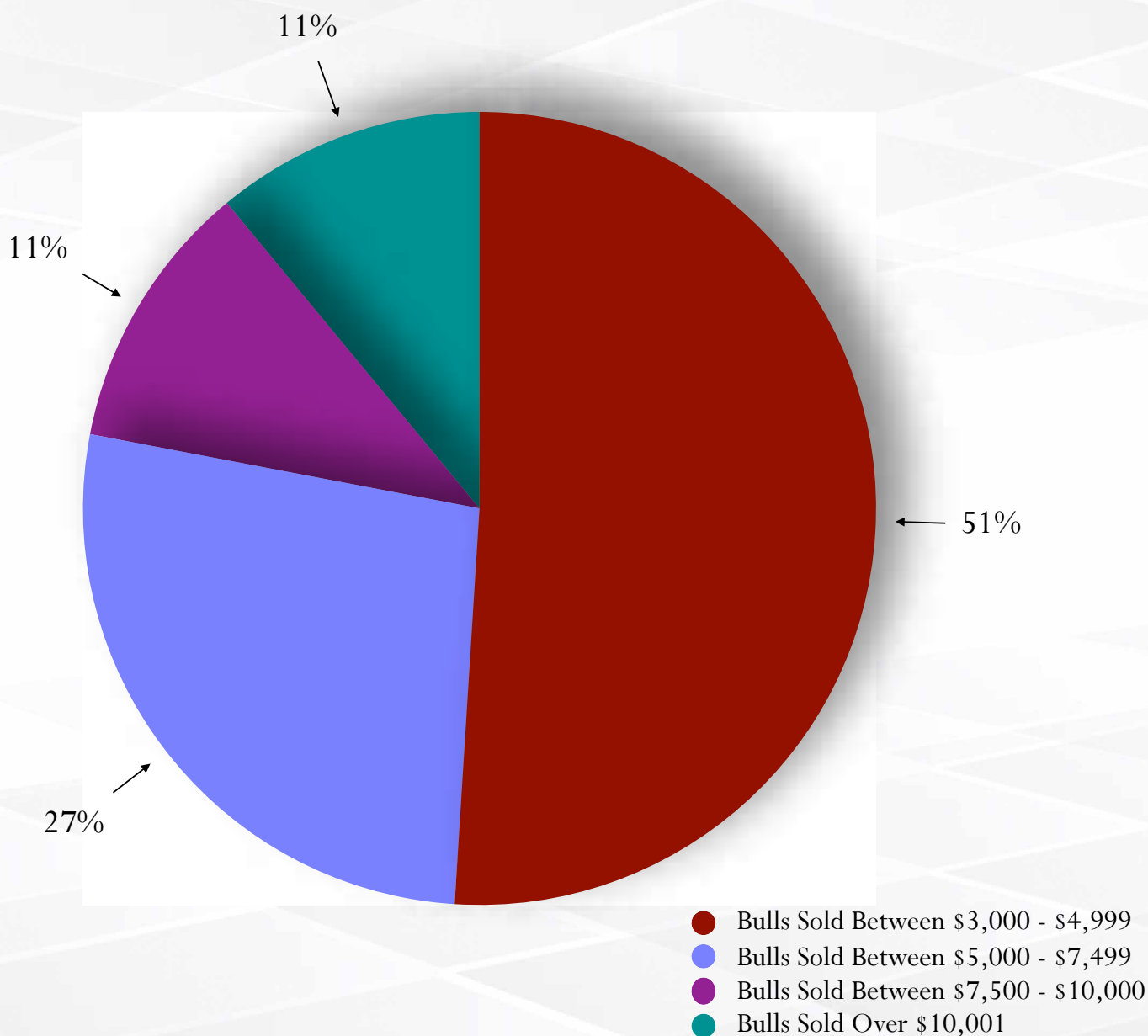
Sincerely,

*Darrell Fornwald*  
*First Class Marketing*



# Affordability

## 2019 Sale Pricing Breakdown



*Meadow Acres Simmental Bulls are Affordable*

Over 50% of the bulls at the 2019 Meadow Acres Simmental Bull Sale sold for \$4,999 or less. With extensive use of ET and AI we are proud to offer many full, 3/4 and 1/2 brothers to provide our customers with a more uniform and consistent product. You will see the direct benefit of uniformity in your calf crop and the added value that they will command!



# MAF *Ma* 173G

Homo Polled :: Red :: 1274899 :: MAF 173G ::  
17 Feb 2019 :: bw-104 :: adj ww-830

ce	bw	ww	yw	mce	mww	milk	api	ti
6.5	3.7	73.2	106.2	6.9	61.5	24.9	11708	65.97

Sire **SPRINGCREEK LINER 56U**  
**SPRINGCREEK LAUNCH 110E**  
SPRINGCREEK BROOKE 68Z

Dam **MAF R HORIZON 7Y**  
**MAF MS 46B**  
IPU MS. TUBEROSE 117Y

We start this year's offering off with the Launch sire group, this is the largest sire group of the offering and an extremely deep set with a lot of consistency but also variety, there is a bull for everyone in this group. The bull that leads off the group is just a February 17th and you would never guess it! 173G is a Launch son that puts it all together, he is long and deep bodied, has excellent muscle shape and maintains a nice smoothness to him. A bull you must appreciate for his overall completeness, style and boasts an impressive weaning weight. You won't have any trouble finding this bull in the pen. He has real herd bull character to him and moves like a cat. This bull's mother is a Horizon daughter that would be one of our very best Horizon's, moderate framed, big middled, with a very good udder. This cow family has been a strong one here. 173G's bull's maternal granddam is still producing strong and maintains a youthfulness to her.





# MAF *Mr* 83G

Homo Polled :: Red :: 1274747 :: MAF 83G  
 26 Jan 2019 :: bw-96 :: adj ww-762

ce	bw	ww	yw	mce	mww	milk	api	ti
6.8	34	75.1	109.7	6.1	58.1	20.5	114.53	645

Sire **SPRINGCREEK LINER 56U**  
**SPRINGCREEK LAUNCH 110E**  
 SPRINGCREEK BROOKE 68Z

Dam **MRL EL TIGRE 52Z**  
**MAF AURORA 190B**  
 IPU MS. DREAMMAKER 235U

83G has been a standout since a young age, but especially since weaning he has catapulted to the top of the group. A bull with immense herd bull character, muscle, middle in an extremely complete package. He is excellent footed and has very good testicular development. A bull that you just love to watch on the move and is also very docile. His dam was our favourite of the bred heifers in 2015, a cherry red ElTigre daughter with tons of depth, power and an excellent udder. This bull is exactly what we believed we could produce when we purchased Launch. This is a pedigree with a lot of predictability and dependability built in. We believe this bull will do tremendous things for his new owners.





# MAF *Mac* 122G

Polled :: Red :: 1274906 :: MAF 122G  
 1 Feb 2019 :: bw-100 :: adj ww-795

ce	bw	ww	yw	mce	mww	milk	api	ti
44	4.9	75.8	1140	5.1	63.7	25.8	111.73	66.29

Sire **SPRINGCREEK LINER 56U**  
**SPRINGCREEK LAUNCH 110E**  
 SPRINGCREEK BROOKE 68Z

Dam **NUG ROYAL RED 324A**  
**MAF GOLDIE 176C**  
 IPU MS. RED ESSENCE 72W

122G is a moderate, stout and hairy individual that is hard to fault. A bull that has always been one with such presence and confidence to him. I just love the head carriage on this bull and the Launch progeny in general. He is so sound in his makeup, gets out and moves with ease on a big hoof and has excellent testicular development. An individual you must appreciate for his big sweeping rib, muscle and softness. When we bought Launch, we knew he was going to be a bull that we could build upon and produce the right kind. Bulls that are sound, functional, attractive, with lots of hair and backed by great cow families. 122G meets all that criteria and with ease. His dam is a beautiful Royal Red 5-year-old, who has been doing a great job here. She is a powerful cow, backed by a powerful cow family. This bull is one you don't want to miss out on.





# MAF *Mac* 133G

Homo Polled :: Red :: 1274857 :: MAF 133G  
 6 Feb 2019 :: bw-92 :: adj ww-830

ce	bw	ww	yw	mce	mww	milk	api	ti
6.9	3.7	74.3	111.8	7.2	65.1	279	123.92	68.2

Sire **SPRINGCREEK LINER 56U**  
**SPRINGCREEK LAUNCH 110E**  
 SPRINGCREEK BROOKE 68Z

Dam **NUG ROYAL RED 324A**  
**MAF NOREMAC 122D**  
 IPU MS. 16M NOREMAC 51X

133G is very similar in type and kind to the last bull. He is moderate framed, big middled, strong topped, clean in his lines and has loads of hair. This bull is free moving, with an excellent foot, something that is very consistent throughout the sire group. 133G has always been a bull that we like for his phenotype, muscle and the cow family behind him. His young Royal Red dam goes back to the Noremac 16M cow, a cow family that you will see has had great impact, not only here but many great herds across the country. She is a beautiful young cow, with an excellent udder. This is a bull that will add pounds, hair and excellent maternal qualities to his calf crop.





# MAF *Mac* 101G

Homo Polled :: Red :: 1274727 :: MAF 101G  
 28 Jan 2019 :: bw-93 :: adj ww-745

ce	bw	ww	yw	mce	mww	milk	api	ti
54	28	65.2	98.4	48	60.1	275	116.92	64.55

Sire **SPRINGCREEK LINER 56U**  
**SPRINGCREEK LAUNCH 110E**  
 SPRINGCREEK BROOKE 68Z

Dam **NUG ROYAL RED 324A**  
**MAF SHAMROCK 106C**  
 IPU MS. RED ESSENCE 19Z

Another Launch, Royal Red combination that is dark red, hairy and more impressive every day. 101G is long bodied with lots of depth, free moving and has a nice smooth design. His mother is a cow that we flushed this past spring and have a nice set of embryo calves now. Her son last year sold to Circle L Simmentals, Len Bergen. MAF Westrock was a feature in the sale last year, as was her first calf the year before. This cow is a bull maker! She is excellent uddered and a beautiful cow overall.





# MAF *Mac* 121G

Polled :: Red :: 1274847 :: MAF 121G :: 3/4  
1 Feb 2019 :: bw-93 :: adj ww-821

ce	bw	ww	yw	mce	mww	milk	api	ti
90	19	68.5	96.9	77	577	234	10739	62.62

Sire **SPRINGCREEK LINER 56U**  
**SPRINGCREEK LAUNCH 110E**  
SPRINGCREEK BROOKE 68Z

Dam **MAF R HORIZON 7Y**  
**MAF BONNIE 2B**  
SIMMENTAL/RED ANGUS

This bull is the exact replica of his sire at this age! Launch 2.0 is a 3/4 blood that everybody loves. He is super hairy, stout, full of muscle and middle and has an excellent foot under him. A bull that is hard to fault and possesses a lot of characteristics that I think are right for the times in the beef business. 121G is strong topped, wide and has length of body with lots of depth and soundness. A bull that will easily catch your attention sale day! He is backed by a beautiful 1/2 blood Horizon daughter that we think highly enough to breed, not use as a recip because she never misses and has produced some excellent females for us and now this guy.



# MAF *Ma* 62G

Homo Polled :: Red :: 1274606 :: MAF 62G  
 24 Jan 2019 :: bw-102 :: adj ww-783

ce	bw	ww	yw	mce	mww	milk	api	ti
6.4	3.1	68.4	105.7	6.7	578	23.6	120.79	64.51

Sire **SPRINGCREEK LINER 56U**  
**SPRINGCREEK LAUNCH 110E**  
 SPRINGCREEK BROOKE 68Z

Dam **LFE CROSS FIRE 365T**  
**WTW SWEETT 1006Y**  
 WTW MS 942 RED BABE 7074T

The first of a few red baldie bulls we have in the offering this year. This bull is a meat machine! 62G is very easy doing, with loads of middle, softness and character to him. Again, consistent with the sire group, this bull is excellent footed, has lots of hair, length and depth. His mother is a cow we purchased out of Checkers when we first got going and she is still here and has really done an excellent job, producing the right kind of bulls and females. This bull will be an asset to any herd. Maternal siblings have sold to Hoegl Livestock, Huron Colony, Lacasse Farms and Swanz Ranch.





# MAF *Mac* 157G

Homo Polled :: Red :: 1274876 :: MAF 157G  
 13 Feb 2019 :: bw-99 :: adj ww-849

ce	bw	ww	yw	mce	mww	milk	api	ti
4.5	4.2	690	1034	4.3	70.0	35.5	116.71	641

Sire **SPRINGCREEK LINER 56U**  
**SPRINGCREEK LAUNCH 110E**  
 SPRINGCREEK BROOKE 68Z

Dam **KOP MARKSMAN 36Y**  
**MAF NOREMAC 129B**  
 IPU MS. 16M NOREMAC 51X

This bull comes from the same cow family as lot 4. Their dams are maternal sisters. The consistency and power in this lineage is hard to dispute when they keep coming like this. 157G is a bull we really appreciate. He is another powerful individual that possesses a lot of muscle expression, depth of body, width, character and soundness. 157G has the largest adjusted weaning weight in the Launch sire group. His dam is a Marksman daughter that works hard, is moderate framed, big bellied and has an excellent udder. This bull should make fabulous females that will be great to look at and make you money!



MAF Mac 92E  
 Maternal Brother



# MAF *Mac* 99G

Homo Polled :: Red :: 1274746 :: MAF 99G  
 28 Jan 2019 :: bw-85 :: adj ww-819

ce	bw	ww	yw	mce	mww	milk	api	ti
8.8	1.8	65.7	100.2	7.2	66.7	33.8	131.56	68.30

Sire **SPRINGCREEK LINER 56U**  
**SPRINGCREEK LAUNCH 110E**  
 SPRINGCREEK BROOKE 68Z

Dam **MAF RED RAMBO 131B**  
**MAF NOREMAC 178D**  
 MAF NOREMAC 129B

Another impressive Launch son, and we are only at the half-way mark on these guys! Another well built bull, with lots of shape, middle and width to him. A bull that gets out and moves well on very good feet and legs. He will cover some ground with ease. 99G has a moderate birth weight and excellent maternal EPD profile. His dam is another member of the Noremac 16M cow family, sired by MAF Red Rambo, a calving ease specialist that has left a very useful set of progeny here and at Rendezvous Farms.



# MAF *Mr* 74G

Homo Polled :: Red :: 1274531 :: MAF 74G  
 25 Jan 2019 :: bw-103 :: adj ww-780

ce	bw	ww	yw	mce	mww	milk	api	ti
48	40	61.9	93.8	4.9	61.2	30.2	120.97	62.02

Sire **SPRINGCREEK LINER 56U**  
**SPRINGCREEK LAUNCH 110E**  
 SPRINGCREEK BROOKE 68Z

Dam **KBR BLACK EXCITER 758T**  
**IPU MS.EXCITER 50W**  
 IPU MS GRANITE 5R

A Launch son that is consistent to the sire group, is hairy, stout, with lots of middle and very complete. 74G moves great on a big nice foot and is well balanced and soft in his design. A very complete individual that will appeal to many. His dam is an excellent producer and has had many sons sell through our sale over the years. The reports on them have all been positive and to no surprise their daughters are outstanding. I would expect no less from this bull!



*MAF Mr 104E*  
 Maternal Brother



*MAF Mr 107C*  
 Maternal Brother





ce 6  
 bw 3.7  
 ww 76.5  
 yw 115.2  
 mce 7  
 mww 69.2  
 milk 30.9  
 api 121.29  
 ti 69.44

Another baldie Launch son that has a different twist on pedigree than most offered here. He is stout, hairy, strong topped and well put together. We purchased his dam as a calf out of the Agribition sale and she has done a very good job since entering production. A bull with an attractive EPD profile, if that's your thing, if not a bull you can appreciate in the flesh just as well.

## MAF *Mac* 120G

Homo Polled :: Red :: 1274860 :: MAF 120G  
 1 Feb 2019 :: bw-95 :: adj ww-845

Sire **SPRINGCREEK LINER 56U**  
**SPRINGCREEK LAUNCH 110E**  
 SPRINGCREEK BROOKE 68Z

Dam **KOP SPARTAN 113A**  
**RJY SIGNATURE RED 7C**  
 RJY SIGNATURE RED 3X



ce 54  
 bw 34  
 ww 678  
 yw 103.9  
 mce 64  
 mww 63.8  
 milk 29.9  
 api 124.15  
 ti 64.58

If pedigrees play a large role in your decisions, have a look at this one. There is a lot of power backing this bull up. His mother goes back the Pocahontas 52N cow, one of the most legendary cows in the breed. Launch's dam, Springcreek Brooke 68Z, is another legendary cow, producing many high selling offspring. You have double bred Springcreek Liner 56U & KOP Crosby, neither of which needs any introduction. This bull follows suit with his sire group; good footed, long bodied, lots of width, hair and overall completeness.

## MAF *Mac* 42G

Homo Polled :: Red :: 1274635 :: MAF 42G  
 20 Jan 2019 :: bw-100 :: adj ww-746

Sire **SPRINGCREEK LINER 56U**  
**SPRINGCREEK LAUNCH 110E**  
 SPRINGCREEK BROOKE 68Z

Dam **IPU CODE RED 53Y**  
**MAF POCAHONTAS 172B**  
 IPU 52N 56U MS LINER 98X



ce 6.5  
 bw 3.3  
 ww 72.8  
 yw 104.7  
 mce 7.5  
 mww 63.6  
 milk 27.2  
 api 112.3  
 ti 64.28

## MAF *Mr* 97G

Scurred :: Red :: 1274748 :: MAF 97G  
 28 Jan 2019 :: bw-92 :: adj ww-806

Sire **SPRINGCREEK LINER 56U**  
**SPRINGCREEK LAUNCH 110E**  
 SPRINGCREEK BROOKE 68Z

Dam **MAF R HORIZON 7Y**  
**MAF PASHMENIA 208D**  
 NUG PASHMENIA 403P



ce 6.5  
 bw 3.1  
 ww 66.4  
 yw 98.1  
 mce 5.9  
 mww 59.3  
 milk 26.1  
 api 119.76  
 ti 64.8

## MAF *Mr* 86G

Homo Polled :: Red :: 1274667 :: MAF 86G  
 26 Jan 2019 :: bw-98 :: adj ww-830

Sire **SPRINGCREEK LINER 56U**  
**SPRINGCREEK LAUNCH 110E**  
 SPRINGCREEK BROOKE 68Z

Dam **NUG ROYAL RED 324A**  
**MAF POCAHONTAS 102D**  
 IPU 68M RED ESSENCE 161X

97G has a lot of hair and when you analyze this bull you really appreciate him for the muscle pattern, depth of body and length he combines. A very complete and powerful individual backed by the legendary Pashmenia 403P cow family. 403P still resides here and has entered retirement. We have 16 direct daughters working within our herd and they are carrying on the tradition of raising very productive, powerful and highly marketable offspring. A bull that has a consistent EPD profile.

86G is a frame score bigger, with lots of hair, as long as they come and still maintains lots of muscle and body. We are very pleased with the job Launch has done for us. He has left us with a very nice set of bulls, but not to be out shadowed are the heifers in the replacement pen. We are really excited to get them into production this time next year! He has been a bull that is a consistent breeder of both bulls and females that are functional and going to last. I believe whatever your type or need for a red herd bull it can most likely be matched within this sire group.





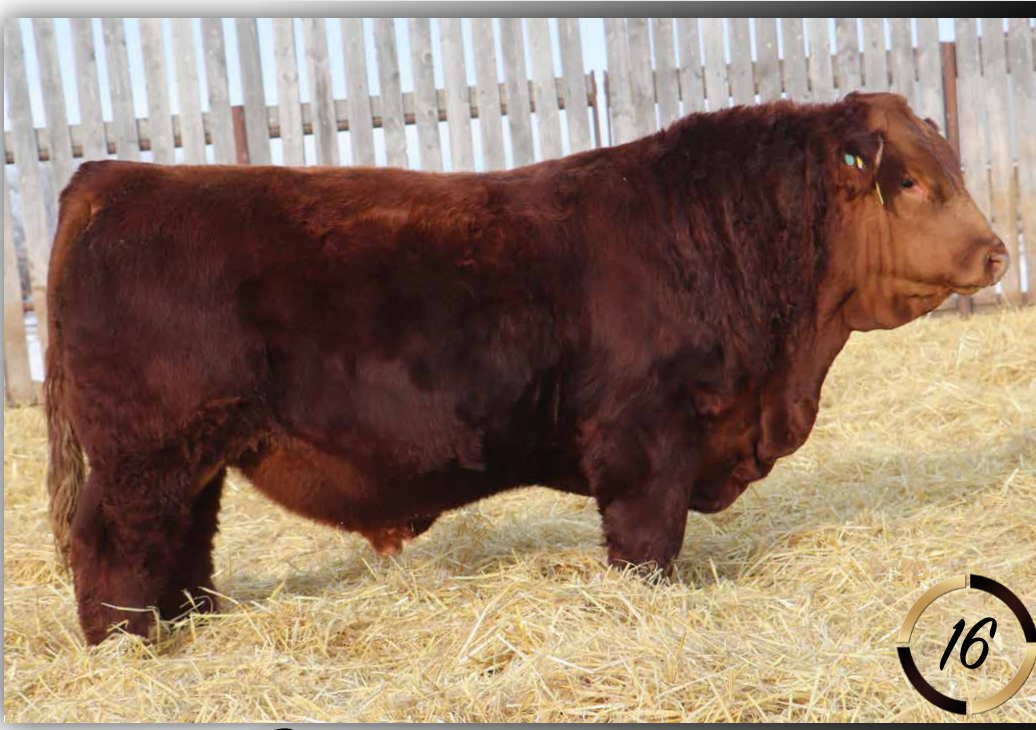
ce 77  
 bw 2.7  
 ww 671  
 yw 96.1  
 mce 6.2  
 mww 58.9  
 milk 25.3  
 api 112.86  
 ti 63.44

# MAF *Mac* 162G

Homo Polled :: Red :: 1274897 :: MAF 162G  
 14 Feb 2019 :: bw-95 :: adj ww-780

Sire SPRINGCREEK LINER 56U  
**SPRINGCREEK LAUNCH 110E**  
 SPRINGCREEK BROOKE 68Z

Dam MAF R HORIZON 7Y  
**MAF LIZZIE 11C**  
 3D MISS RED LIZZIE 441Y



ce 8.6  
 bw 2.2  
 ww 68.8  
 yw 103.5  
 mce 6.6  
 mww 62.3  
 milk 27.9  
 api 120.55  
 ti 66.1

# MAF *Mac* 96G

Homo Polled :: Red :: 1274741 :: MAF 96G  
 28 Jan 2019 :: bw-95 :: adj ww-837

Sire SPRINGCREEK LINER 56U  
**SPRINGCREEK LAUNCH 110E**  
 SPRINGCREEK BROOKE 68Z

Dam WHEATLAND BULL 738T  
**3D MISS RED LIZZIE 441Y**  
 LFE LIZZIE 619K

Here is a dark red Launch son that is a frame score bigger than average of the sire group. He is hairy and long bodied with lots of shape and real character to him. A bull with a good foot and very clean sheathed. His dam is another Horizon daughter that is blood red and has been a solid producer. His maternal granddam is the dam of the lot 16 bull you will see next. Lots of performance in these bulls.

The final bull of the Launch sire group is another dark red bull with more frame and rugged appearance. He is very long bodied, has lots of muscle shape and big feet. His dam is a cow we purchased as an open heifer from 3D Simmentals and she continues to be a strong producer. 441Y is one of the most capacious cows on the place and comes from a cow family that has longevity and strong production history. Her granddaughter was our high selling red female in the 2018 Maidens of the Meadow sale to Rainbow River Simmentals.





ce 71  
 bw 34  
 ww 73.1  
 yw 104.4  
 mce 2.9  
 mww 577  
 milk 211  
 api 108  
 ti 66.08

This Rambler son's dam is a maternal sister to the last bull. Out of a first calving Westcott daughter, this bull has really grown and developed well. He is solid made, thick and has lots of middle to him. This is our second and final set of Rambler calves. The first daughters are calving out now and will be very useful females. The Westcott females pack a punch and combined with Rambler provide a balance that's versatile.



## MAF *Ma* 13G

Homo Polled :: Red :: 1274537 :: MAF 13G  
 13 Jan 2019 :: bw-95 :: adj ww-780

Sire WS PILGRIM H182U  
**RUST HENN RAMBLER 6003**  
 KAPPES SADIE M166

Dam WFL WESTCOTT 24C  
**MAF LIZZIE 194E**  
 3D MISS RED LIZZIE 441Y



ce 79  
 bw 15  
 ww 57  
 yw 80  
 mce 3.6  
 mww 56.2  
 milk 277  
 api 114.71  
 ti 60.82

This Rambler son is about as deep red as you can make them! He is stout, deep and very well balanced. Smooth made and sound, this bull will be one to catch your eye. His dam is the great Pocahontas 215U, the dam to breed legend, Red Western, she can be found in some of the most popular pedigrees in the breed. She is a 52N daughter, that was a moderate and powerful individual that was strong uddered and ideal in her type and kind. We lost her this fall but are glad that we were able to get her IVF'd to increase her number of progeny here before that happened. There is power in the blood here.



## MAF *Ma* 55G

Homo Polled :: Red :: 1274665 :: MAF 55G  
 23 Jan 2019 :: bw-97 :: adj ww-797

Sire WS PILGRIM H182U  
**RUST HENN RAMBLER 6003**  
 KAPPES SADIE M166

Dam TNT ACCELERATOR S226  
**IPU 52N POCAHONTAS 215U**  
 IPU RED POCAHONTAS 52N



# MAF *Ma*45G

Homo Polled :: Red :: 1274655 :: MAF 45G  
 21 Jan 2019 :: bw-102 :: adj ww-798

ce	bw	ww	yw	mce	mww	milk	api	ti
5.5	4.5	76.5	118.8	1.8	62.2	23.9	122.72	71.51

Sire CDIAUTHORITY 77X  
**KWA LAW MAKER 59C**  
 KWA MS ROCK 14X

Dam TNT ACCELERATOR S226  
**IPU 52N POCAHONTAS 215U**  
 IPU RED POCAHONTAS 52N

A maternal brother to the lot 18 bull, this one sired by KWA Law Maker. He wasn't as cooperative in the picture pen as we would have hoped, but he would be our pick of the two brothers. Again, dark red in colour, lots of muscle and width of top in this guy. A bull that's smooth made and straight in his lines and very clean sheathed. Sound and athletically built with impressive weaning and yearling numbers, he will produce highly marketable calves. We sold a maternal brother to this bull to Bonchuk Farms and MAF Red Standard has bred well for them. A strong and different twist on pedigree that's worth your consideration.





# MAF *Ma* 90G

Homo Polled :: Red :: 1274653 :: MAF 90G  
 27 Jan 2019 :: bw-99 :: adj ww-833

ce	bw	ww	yw	mce	mww	milk	api	ti
94	27	745	1144	5.3	56.6	19.3	131.1	69.73

Sire CDI AUTHORITY 77X  
**KWA LAW MAKER 59C**  
 KWA MS ROCK 14X

Dam IPU RED SPECIALIST 70T  
**IPU MS. SPECIALIST 16Z**  
 IPU 68M RED ESSENCE 162X

Another dark red Law Maker son, long spined, big testicles and lots of middle to this bull. He carries his muscle pattern well and is smooth in his design. He is a flush mate to lot 21 and maternal brother to lot 22. His dam, 16Z, is a beautiful Specialist daughter that we were able to do some IVF work on. She is ideal in her phenotype and excellent uddered, nice frame size and big bodied and goes back to the Pocahontas 68M cow. A pedigree that's a bit different on both sides but is reliable none the less. This bull reads well on paper and in person.





ce 10.4  
 bw 2.5  
 ww 72.6  
 yw 112.5  
 mce 5.9  
 mww 61.9  
 milk 25.6  
 api 131.86  
 ti 69.13

## MAF *Ma* 57G

Homo Polled :: Red :: 1274956 :: MAF 57G  
 23 Jan 2019 :: bw-95 :: adj ww-716

Sire CDI AUTHORITY 77X  
**KWA LAW MAKER 59C**  
 KWA MS ROCK 14X

Dam IPU RED SPECIALIST 70T  
**IPU MS. SPECIALIST 16Z**  
 IPU 68M RED ESSENCE 162X



ce 8.7  
 bw 2.8  
 ww 76.4  
 yw 115.8  
 mce 4.1  
 mww 60.9  
 milk 22.7  
 api 128.93  
 ti 72.46

## MAF *Ma* 5G

Polled :: Red :: 1274949 :: MAF 5G :: 7/8  
 8 Jan 2019 :: bw-105 :: adj ww-827

Sire WS STEPPING STONE B44  
**CROSSROAD RED STONE 10E**  
 IPU MS. CODE RED 249A

Dam IPU RED SPECIALIST 70T  
**IPU MS. SPECIALIST 16Z**  
 IPU 68M RED ESSENCE 162X

A full brother to the last bull, he is dark red, long bodied and smooth made. When we flushed 16Z we were hoping for a large number of females. We did get more females than bulls and are excited for the future of these full sisters in our program. I believe a large benefit of this bull will be his daughters. If you keep or market replacement females, 57G should be high on your list.

The natural calf of 16Z, a Red Stone, a larger framed bull with loads of length, smooth made and nice muscled. A  $\frac{3}{4}$  brother to the lot 26 bull, the Specialist females have been excellent producers and are the type of female that is moderate framed but big bodied and excellent uddered. His mother is another donor female that we have an exciting set of females to build from. 5G will add some frame, weight and strong maternal traits.



# MAF *Ma* 95G

Homo Polled :: Red :: 1274738 :: MAF 95G :: 7/8  
 28 Jan 2019 :: bw-80 :: adj ww-882

ce	bw	ww	yw	mce	mww	milk	api	ti
94	15	80.6	125.8	44	672	26.9	135.62	778

Sire WS STEPPING STONE B44  
**CROSSROAD RED STONE 10E**  
 IPU MS. CODE RED 249A

Dam LFETHE RIDDLER 323B  
**MAF CASSADE 185D**  
 MAF CASSADE 101A

The Red Stone son we are most excited about! This bull has been a stand-out from the start and has not disappointed. He continues to mature into the kind we are proud to raise and want to utilize within our own program. 95G started off at a moderate birthweight and has grown well and weaned off as one of the heaviest bulls. He is moderate framed and stout with lots of rib shape and depth to him. He is soft made, hairy and as complete as they come! This baldie also comes with the bonus of having zero white besides that perfect blaze. His young Riddler dam did a great job here and is backed by a fantastic cow family. She is very good uddered, moderate, long bodied, stylish and raised a bull last year that sold to Knud Jensen. When you have a look at this bull on paper, he is near flawless and above average in every category of his EPD profile and tops that off with Indexes both within the top 4 to 2%. 95G will replace Red Stone in our AI program this spring. He is a bull that covers all the bases and one that we are excited for the future of.



*MAF Cassade 785D*  
 Dam's Udder



*Crossroad Red Stone 10E*  
 Sire



*Remington Cassade 287*  
 Maternal Great Granddam





# MAF *Ma* 23G

Homo Polled :: Red :: 1274520 :: MAF 23G :: 7/8  
 16 Jan 2019 :: bw-86 :: adj ww-803

ce	bw	ww	yw	mce	mww	milk	api	ti
72	1.9	754	1130	4.9	68.3	30.6	123.22	71.88

Sire **WS STEPPING STONE B44**  
**CROSSROAD RED STONE 10E**  
 IPU MS. CODE RED 249A

Dam **ANKONIAN RED CAESAR**  
**IPU MS. 16M NOREMAC 51X**  
 LCL MISS NOREMAC 16M

Another red baldie Red Stone son that is hairy and a performance orientated bull. If you like them with extra hair, deep sided, long bodied and thick, this is a bull to have a look at! His dam at 10 years of age remains youthful, with an excellent tight made udder that milks hard, a cow that is nice made and has tons of rib shape. Her influence can be seen in multiple lots in this catalogue, with her daughters producing like their dam. A bull that has a stellar EPD profile, with all categories being above breed average, and a nice spread on birthweight to weaning weight.



ce 94  
 bw 0.9  
 ww 68.2  
 yw 104.7  
 mce 6.7  
 mww 59.9  
 milk 25.8  
 api 129.67  
 ti 69.34

75G is dark red, long, deep and excellent footed. These Red Stone sons have nice birthweights and rank high in weaning weight. They have performance and eye appeal. We have a larger group of replacement heifers in the pen and I can tell you that they are superb! Powerful, hairy, eye appealing and are going to have very nice udders. We are excited for their future within our program!



## MAF *Mr* 75G

Polled :: Red :: 1274751 :: MAF 75G :: 7/8  
 25 Jan 2019 :: bw-88 :: adj ww-795

Sire WS STEPPING STONE B44  
**CROSSROAD RED STONE 10E**  
 IPU MS. CODE RED 249A

Dam S-PAW TURBO CHARGED  
**IPU MS. TUBEROSE 117Y**  
 IPU POCAHONTAS 243W



ce 8.9  
 bw 1.3  
 ww 66.4  
 yw 100.7  
 mce 5.1  
 mww 61.1  
 milk 27.9  
 api 126.78  
 ti 66.86

31G is a long spined and smooth made Red Stone son. When we purchased Red Stone, we were impressed with the power and presence he possessed, his donor dam that is responsible for many high selling bulls and a twist to a red pedigree. These bulls offer this to our customers and our program moving forward. This bull is one that is backed by an outstanding donor female, a Specialist female that is the dam to the high selling Westcott bred heifer to Double Bar D farms for \$21,000. Strong udders and productivity are built in here.



## MAF *Mr* 31G

Polled :: Red :: 1274596 :: MAF 31G :: 7/8  
 18 Jan 2019 :: bw-100 :: adj ww-820

Sire WS STEPPING STONE B44  
**CROSSROAD RED STONE 10E**  
 IPU MS. CODE RED 249A

Dam IPU RED SPECIALIST 70T  
**IPU MS. SPECIALIST 119Z**  
 IPU MS. RED ESSENCE 139X



ce 8.5  
 bw 0.8  
 ww 71.3  
 yw 108.7  
 mce 3  
 mww 61.1  
 milk 25.4  
 api 125.52  
 ti 70.2

The only Sleep Easy son of the offering. He is a moderate framed bull with lots of length and depth to him. He is a bull that gets out and moves well and is well balanced and complete in his make-up. 100G is out of a first calving Deputy female, a bigger, power type that has another good calf this year. This bull has a nice set of EPD's with the majority all being above average.



# MAF *Mr* 100G

Homo Polled :: Red :: 1274849 :: MAF 100G  
 28 Jan 2019 :: bw-70 :: adj ww-763

Sire KUNTZ SHERIFF 8A  
**MRL SLEEP EASY 140D**  
 MRL MISS 836W

Dam IPU RED DEPUTY 25C  
**MAF KEEPSAKE 36E**  
 MAF KEEPSAKE 196B



ce 78  
 bw 16  
 ww 79.4  
 yw 122.1  
 mce 3.5  
 mww 66.2  
 milk 26.5  
 api 127.01  
 ti 73.63

A Law Maker son out of first calving Wescott daughter. This bull is moderate, thick and has lots of shape to him. Modest birthweight and strong weaning weight combine to make impressive stats and proof of a job well done from one of our favourite young Westcott females. There will be grow to this guy's calves.



# MAF *Mr* 30G

Homo Polled :: Red :: 1274544 :: MAF 30G  
 18 Jan 2019 :: bw-77 :: adj ww-837

Sire CDI AUTHORITY 77X  
**KWA LAW MAKER 59C**  
 KWA MS ROCK 14X

Dam WFL WESTCOTT 24C  
**MAF MACKFRID 53E**  
 IPU MS. REDSKIN 35Z



# MAF *Mr* 213G

Polled :: Red :: 1274938 :: MAF 213G  
6 Mar 2019 :: bw-100 :: adj ww-857

ce	bw	ww	yw	mce	mww	milk	api	ti
6.1	4.1	70.3	1044	1.5	53.8	18.6	11102	6464

Sire IPU RED SPECIALIST 70T  
*MAF MR 120C*  
IPU MS. RED WESTERN 122A

Dam NUG ROYAL RED 324A  
*MAF ROSE 184D*  
IPU MS. STEFFI 108Z

Here is the only bull in the offering by 120C, a Specialist son that we kept to utilize for clean up purposes here. So, he hasn't seen a lot of use, but with bulls like this, it has us wondering why not! This bull is ideal in his type and kind. Keep in mind he is a beginning of March bull and he has tremendous growth. He is stout, big ribbed and moves out well. His dam is another Royal Red female that is backed by a powerful cow family as well. This guy will be one that you will be proud to show off to the neighbours.



ce 8.4  
 bw 4.2  
 ww 73.5  
 yw 107.5  
 mce 2.3  
 mww 61.5  
 milk 24.7  
 api 130.19  
 ti 72.21

The Starter sons here are almost identical! Very consistent in their type and kind and built right to bring in big weaning weights, good haired, very marketable cattle. This Starter son offers a bit of a different twist on most of our pedigrees. His dam is a Loaded Up 79C, who is a red full brother to Bankroll. She is strong uddered and long bodied with lots of depth of rib. He too is long bodied, thick and deep and moves out effortlessly. A bull who ranks in the top 10% of both index figures.



## MAF *Ma* 193G

Homo Polled :: Red :: 1274910 :: MAF 193G  
 24 Feb 2019 :: bw-98 :: adj ww-877

Sire MRL 91Y  
**MRL THE STARTER 39C**  
 MRL MISS 3379A

Dam W/C LOADED UP 79C  
**RUST MISS SADIE 71E**  
 RUST MISS 5215C



ce 6.1  
 bw 4.1  
 ww 69.6  
 yw 101.7  
 mce 2.5  
 mww 59.7  
 milk 24.9  
 api 121.38  
 ti 67.46

Another end of February bull that is hairy, stout and long spined. His mother is again something a bit different here, a Red Rocket female out of one of our donor cows who is moderate framed and huge middled. These first calvers did a whale of a job on these bulls.



## MAF *Ma* 195G

Homo Polled :: Red :: 1274867 :: MAF 195G  
 25 Feb 2019 :: bw-98 :: adj ww-824

Sire MRL 91Y  
**MRL THE STARTER 39C**  
 MRL MISS 3379A

Dam COME AS U R RED ROCKET  
**MAF SHAMROCK 184E**  
 IPU MS. EXCITER 2W



# MAF *Mr* 211G

Homo Polled :: Red :: 1274921 :: MAF 211G  
 5 Mar 2019 :: bw-93 :: adj ww-763

ce	bw	ww	yw	mce	mww	milk	api	ti
7.7	3.4	72.1	1040	3.8	60.2	24.1	117.9	644.3

Sire NCB COBRA 47Y  
**MAF KING COBRA 3C**  
 MAF STAR 31A

Dam WHEATLAND BULL 47X  
**MAF 47X TARA 152X 18Z**  
 SPRINGCREEK TARA 152X

A red baldie King Cobra son, out of two black parents, this bull is a March bull who just keeps coming on! If you are looking to freshen your genetics on your red cows, this bull does that. He is stout and moderate framed with style. He is good footed and moves well. A bull that has lots of middle and softness to him. His dam is an excellent producer and the mother of two high selling females for us.





# MAF *Ma* 148G

Homo Polled :: Homo Black :: 1281366 :: MAF 148G  
 10 Feb 2019 :: bw-84 :: adj ww-884

ce	bw	ww	yw	mce	mww	milk	api	ti
13.8	0.6	80.2	1224	7.3	58.5	18.4	138.69	76.82

Sire MR TR HAMMER 308A ET  
**KCC1 EXCLUSIVE 116E**  
 TKCCVICTORIA 57A

Dam LFE THE RIDDLER 323B  
**MAF PATRICIA 183D**  
 IPU MS BLACK STETSON 246T

The first of the \$240,000 valuation KCC1 Exclusive 116E sons to sell in Canada and he is big time! We purchased the Canadian Semen Rights on Exclusive after seeing him in Denver. He was the lead off bull in the Champion pen of three bulls that year for the Kearns Family. He was special and I am glad that we were able to get a deal done to bring him here! 148G is a mid February bull that started off at 84 lbs. was born quickly with tons of vigour. He kept your eye as he was growing and by the beginning of July was a true stand out in the bull pasture. He has continued to impress and grow into a true herd bull. The spread on these cattle is impressive, they come small and grow. This bull ended up ranking 3rd overall at weaning time. He is moderate, stout and big bellied. He is smooth and clean in his design, strong and wide topped and holds it all together with an excellent big foot. Ultra complete and hard to fault in person or on paper, this bull does it all with ease! The spread on calving to yearling is incredible and he is going to be a versatile sire that will moderate frame and make excellent bulls and females. His dam is a Riddler daughter who would be a maternal sister to MAF Moustache Mafia, who sold to Ultra Livestock. She is very feminine, excellent uddered, big middled and clean boned. She raised a bull on her first go that sold last year to Nick & Chelsie Shier. We look forward to using him heavily in our herd this spring and are excited to see what he does within the breed.





# MAF *Mr* 186G

Homo Polled :: Hetero Black :: 1281371 :: MAF 186G  
 21 Feb 2019 :: bw-100 :: adj ww-850

ce	bw	ww	yw	mce	mww	milk	api	ti
94	2.9	79.6	112.6	5.1	46.8	70	130.79	73.27

Sire MR TR HAMMER 308A ET  
**KCCI EXCLUSIVE 116E**  
 TKCCVICTORIA 57A

Dam MRL EL TIGRE 52Z  
**MAF PASHMENIA 166B**  
 NUG PASHMENIA 403P

Another Exclusive son and he is the stoutest bull in the pen. He is moderate framed, has explosive muscle and rib shape with extra extension through his front third, and has an excellent foot under him. 186G has big testicles, loads of character and excellent hair. To sweeten the deal even further he is backed by the Pashmenia 403P cow family. His dam is an excellent uddered, heavy milking El Tigre that is powerful and great to look at. Excellent growth numbers complete what this herd bull has to offer. A maternal brother sold last year to Josh Stentoft, Montana. This is a bull that will moderate frame and add muscle and shape.







ce 13  
 bw 12  
 ww 69.1  
 yw 103.4  
 mce 78  
 mww 57  
 milk 22.4  
 api 134.31  
 ti 7143

## MAF *Mac* 150G

Polled :: Hetero Black :: 1275427 :: MAF 150G  
 10 Feb 2019 :: bw-95 :: adj ww-856

Sire MR TR HAMMER 308A ET  
**KCCI EXCLUSIVE 116E**  
 TKCCVICTORIA 57A

Dam WHEATLAND STOUT 930W  
**MAF TARA 13A**  
 SPRINGCREEK TARA 123S



MAF Blackhawk 32C  
 Maternal Brother

Another impressive Exclusive son that follows the consistent look and pattern that this sire group has. The sire group has immense character and can be easily spotted. They all have the same head. This bull is bold in his presence, thick made, has lots of middle, excellent testicular development and hair. He is a maternal brother to MAF Blackhawk, a bull we sold to Packett Brothers and utilized through AI a bit ourselves. Those females are outstanding, which is no surprise considering the dam, 13A, is a cow that is ideal in every way.



ce 10.1  
 bw 2.2  
 ww 67.5  
 yw 105.8  
 mce 5.3  
 mww 50.7  
 milk 16.9  
 api 128.06  
 ti 68.3

## MAF *Mac* 184G

Homo Polled :: Hetero Black :: 1281370 :: MAF 184G  
 21 Feb 2019 :: bw-92 :: adj ww-728

Sire MR TR HAMMER 308A ET  
**KCCI EXCLUSIVE 116E**  
 TKCCVICTORIA 57A

Dam 3D BLK FULL THROTTLE 483X  
**MAF FANCY 70B**  
 IRCC XTRA FANCY 7X

The last of the Exclusive group. We didn't get semen up here until May, so we didn't get a lot of calves the first year, but we are very excited about the ones we did get. We used him hard last spring and we are expecting over 40 calves this year. The females are special. We don't plan to sell any and look forward to having more to add to the herd this year. This bull is an end of February and is the most moderate framed of the group. He has tons of hair and is complete made with an excellent big foot.



# MAF *Mac* 163G

ce	bw	ww	yw	mce	mww	milk	api	ti
6.1	24	74.8	100.0	2.0	56.3	18.9	12734	72.44

Homo Polled :: Homo Black :: 1274885 :: MAF 163G :: 7/8  
 14 Feb 2019 :: bw-95 :: adj ww-835

Sire WS PILGRIM H182U  
**TKCC CARVER 65C**  
 FORD RJ DOLLY Y83

Dam MAFTHUNDER STRUCK 44B  
**MAF CLAIR 7D**  
 IPU 12R MSTEMPTRESS 274Y

While waiting for the Exclusive semen, we bought some Carver semen to utilize in the meantime. Carver hails from the same cow family as Exclusive, so we thought it would be a good fit. With bulls like this, we will use more of Carver for sure. This bull has lots of jam to him, is wide, with lots of middle and soft made. He is long bodied and carries himself with pride and moves out freely and with ease. Ranking #2 in weaning in his contemporary group, this bull will add hair and a lot of style. 163G's dam is nice female that is feminine, long bodied with lots of depth and is excellent uddered. This bull will be sure to catch your eye and hold your attention.





ce 72  
 bw 17  
 ww 66.4  
 yw 877  
 mce 2.8  
 mww 50  
 milk 16.8  
 api 116.19  
 ti 66.61

Another Carver son, a more moderate framed bull that is clean in his lines, thick and clean boned. 110G offers an outcross pedigree on both sides. His dam is a big bodied female that has produced bulls throughout her production here. This is a bull that brings nice balance of phenotype and twist of pedigree.

## MAF *Mac* 110G

Sire WS PILGRIM H182U  
**TKCC CARVER 65C**  
 FORD RJ DOLLYY83

Dam LFE MR LEWIS 347P  
**MISS R PLUS8129U**  
 KWD MISS SONJA 105K

Scurred :: Homo Black :: 1274864 :: MAF 110G :: 7/8  
 30 Jan 2019 :: bw-93 :: adj ww-733



ce 48  
 bw 44  
 ww 77.2  
 yw 116.7  
 mce 4  
 mww 66.2  
 milk 276  
 api 113.32  
 ti 65.79

This is the second group of Sailor sons we have sold. They were a sale highlight last year and will be again this year. This bull is a performance bull, frame score more than most of the sire group, thick made and long spined. This bull is smooth made and has a good foot under him. A bull that has huge performance numbers and will produce heavy offspring that will be good looking and highly marketable.

## MAF *Mac* 115G

Sire SVS CAPTAIN MORGAN 11Z  
**MAF DRUNKEN SAILOR 266C**  
 NUG PASHMENIA 403P

Dam NCB COBRA 47Y  
**MAF CLAIR 195B**  
 IPU 12R MSTEMPTRESS 125Z

Homo Polled :: Homo Black :: 1274842 :: MAF 115G  
 31 Jan 2019 :: bw-105 :: adj ww-868



# MAF *Mac* 114G

Homo Polled :: Homo Black :: 1274886 :: MAF 114G  
 31 Jan 2019 :: bw-80 :: adj ww-783

ce	bw	ww	yw	mce	mww	milk	api	ti
100	10	648	100.3	5.2	590	26.6	11783	63.54

Sire SVS CAPTAIN MORGAN 11Z  
**MAF DRUNKEN SAILOR 266C**  
 NUG PASHMENIA 403P

Dam REMINGTON LOCK N LOAD 54U  
**MAF CASSADE 18A**  
 REMINGTON CASSADE 28T

A flashy Sailor baldie that will catch your eye sale day. He is thick made, long bodied with lots of middle to him and a real softness to his design. Nice fronted and extra extension through that front third and a moderate birthweight puts the icing on the cake. His mother is a beautiful Lock n Load daughter out of the Remington Cassade 28T cow. The maternal strength in this bull is outstanding. Study this pedigree and you will find so many breed greats stacked up here. If you raise replacement females, mark this bull high. Can you imagine the brockle face beauties you will have to move your program forward? Don't miss out here.





# MAF *Ma* 82G

Homo Polled :: Homo Black :: 1274829 :: MAF 82G  
 26 Jan 2019 :: bw-98 :: adj ww-828

ce	bw	ww	yw	mce	mww	milk	api	ti
47	3.9	711	110.7	3.5	56.6	210	98.19	59.54

Sire SVS CAPTAIN MORGAN 11Z  
**MAF DRUNKEN SAILOR 266C**  
 NUG PASHMENIA 403P

Dam LFE COMMISSIONER 811Z  
**LFE BS CROCUS 9C**  
 LFE BS CROCUS 179W

82G is a TANK! This bull is moderate, stout, huge middle and gets noticed quickly by visitors. He is very complete and as thick as they come. You could set a table on his top and he is so quiet, he'd probably let you. It isn't hard to see why these bulls were so popular last year. This will be the final group of Sailor sons to sell, so don't miss out on this group. 82G's dam we purchased from the Lewis's as a bred heifer, that has fit in nicely, being a high-quality producer from a young age. She is tanky, moderate framed and strong uddered.





ce 94  
 bw 05  
 ww 65.2  
 yw 103.3  
 mce 76  
 mww 59.8  
 milk 27.2  
 api 113.25  
 ti 62.9

# MAF *Mr* 68G

Sire SVS CAPTAIN MORGAN 11Z  
**MAF DRUNKEN SAILOR 266C**  
 NUG PASHMENIA 403P

Dam PEAK DOT BOLD 204U  
**T&G CATTLE ALLIE 1A**  
 LONE STAR ROSEBUD 14X

Homo Polled :: Homo Black :: 1274824 :: MAF 68G :: 1/2  
 25 Jan 2019 :: bw-95 :: adj ww-808

An impressive 1/2 blood bull, who's mother is one of the most impressive Angus cows and always pointed out by visitors. He has a lot of angus character to him. He is thick, long and huge depth of rib. Smooth and well balanced with great growth. A full brother walks the pastures at T & G Walter Farms that has matured into a very impressive herd bull, this bull will be great to look at and leave you a great set of calves. If you are on the fence about using a Simmental bull on your angus cows, this would be a great place to start.



ce 93  
 bw 23  
 ww 72.6  
 yw 101.7  
 mce 61  
 mww 51.1  
 milk 14.8  
 api 137.46  
 ti 74.54

# MAF *Mr* 6G

Sire WS PILGRIM H182U  
**CCLT ALLIANCE 91C**  
 BROOKS SHINIA 1A

Dam LFETHE RIDDLER 323B  
**MAF FC DREAMLADY 294D**  
 MAF DREAMLADY 2Z

Polled :: Homo Black :: 1274417 :: MAF 6G  
 9 Jan 2019 :: bw-86 :: adj ww-785

The only Alliance son in the offering this year, off a first calving fall heifer. This bull is big bodied, long and thick made. He is sired by a member of the Dreamlady family, the one responsible for Horizon, as well as MAF Revere, a bull that walks the pastures of Ultra Livestock. This bull displays extra depth of rib and style and will be a great addition to any herd bull battery.



# MAF *Mac* 111G

Homo Polled :: Homo Black :: 1274838 :: MAF 111G :: 1/2  
 31 Jan 2019 :: bw-100 :: adj ww-836

ce	bw	ww	yw	mce	mww	milk	api	ti
10.8	1.5	68.4	102.2	6.4	61.0	26.8	123.33	70.01

Sire W/C LOADED UP 1119Y  
**W/C BANKROLL 811D**  
 MISS WERNING KP 8543U

Dam SAV WALL STREET 7091  
**ELLDEN LEAD SWAN 103Y**  
 JUSTAMERE 1036 SWAN 751W

Here is an impressive half blood Bankroll son. This brockle face bull has been one that caught your eye since the beginning. He is extremely well balanced, really thick with lots of middle and strong topped. A bull that combines the two breeds so well. Nice fronted and powerful on a nice frame size. His mother is a great producing Wall Street daughter, that had a crowd favorite heifer calf in last years sale. A bull that should make some powerful and stylish calves that will be highly marketable through many different avenues.





# MAF *Mac* 32G

Homo Polled :: Homo Black :: 1274745 :: MAF 32G  
 18 Jan 2019 :: bw-95 :: adj ww-753

ce	bw	ww	yw	mce	mww	milk	api	ti
5.3	44	74.9	108.7	3.2	49.6	12.1	121.47	69.62

Sire CCLT ALLIANCE 91C  
**WHEATLAND AFFILIATE 7128E**  
 WHEATLAND LADY 308A

Dam LFE THE RIDDLER 323B  
**MAF MONTANA 37D**  
 REMINGTON MISS MONTANA 76

Two years ago, Affiliate sold that spring for a record-breaking amount and we were one of a few producers that were able to get a semen package on him. It's a powerful group and 32G is the ideal bull to lead off the sire group. A complete individual, with lots of muscle, mass, excellent hair coat and style. He is deep sided and is backed by one of our favourite Riddler daughters. The Montana cow family is a deep one here, we have a very strong set of females that are nice to look at and their production is topnotch.







# MAF *Ma* 140G

Homo Polled :: Hetero Black :: 1274859 :: MAF 140G  
 8 Feb 2019 :: bw-97 :: adj ww-825

ce	bw	ww	yw	mce	mww	milk	api	ti
34	4.9	724	102.5	1.9	55.1	18.9	101.63	62.66

Sire CCLT ALLIANCE 91C  
**WHEATLAND AFFILIATE 7128E**  
 WHEATLAND LADY 308A

Dam NUG ROYAL RED 324A  
**MAF PASHMENIA 160C**  
 NUG PASHMENIA 403P

This is a very well-designed bull that is powerful yet smooth made Affiliate son. He has a big sweeping rib, wide topped and is heavy muscled. He has nice length and moves out with ease. He is another bull in the offering backed by a Pashmenia 403P daughter, this one a red Royal Red daughter with more frame and length. A maternal sister sold in last year's sale to Downhill Simmentals. This bull should produce calves that wean off heavy, are great haired and look the part.





ce 26  
 bw 54  
 ww 65  
 yw 92.7  
 mce 3  
 mww 56.6  
 milk 24.1  
 api 98.93  
 ti 56

Another Affiliate \* Pashmenia combination here with this baldie. 85G follows suit with the sire group being powerful, great haired, moderate framed and a meat machine. Strong topped, this bull will bring that highly marketable blaze and a heavy set of calves. His dam is a Lotto daughter of 403P that brings a nice shot of maternal traits.

# MAF *Mr* 85G

Polled :: Hetero Black :: 1274539 :: MAF 85G  
 26 Jan 2019 :: bw-101 :: adj ww-757

Sire CCLT ALLIANCE 91C  
**WHEATLAND AFFILIATE 7128E**  
 WHEATLAND LADY 308A  
 Dam SPRINGCREEK LOTTO 52Y  
**MAF PASHMENIA 180D**  
 NUG PASHMENIA 403P



ce 27  
 bw 53  
 ww 73  
 yw 98.3  
 mce 14  
 mww 54.1  
 milk 176  
 api 96.75  
 ti 61.29

Moderate and tanky this bull, he is the boldest in his structure of the Affiliates. Jam packed full of muscle and rib shape this guy is a powerhouse and no surprise when combining his Horizon\* 403P dam. A maternal brother sold last year to Hill 70 Quantock. This pedigree packs a punch and will bring that to his calf crop.



# MAF *Mr* 130G

Polled :: Hetero Black :: 1274871 :: MAF 130G  
 6 Feb 2019 :: bw-101 :: adj ww-786

Sire CCLT ALLIANCE 91C  
**WHEATLAND AFFILIATE 7128E**  
 WHEATLAND LADY 308A  
 Dam MAF R HORIZON 7Y  
**MAF PASHMENIA 167C**  
 NUG PASHMENIA 403P



ce 26  
 bw 53  
 ww 746  
 yw 104  
 mce -0.5  
 mww 544  
 milk 171  
 api 101.47  
 ti 63.54

## MAF *Mac* 123G

Sire CCLT ALLIANCE 91C  
 WHEATLAND AFFILIATE 7128E  
 WHEATLAND LADY 308A

Dam MRL EL TIGRE 52Z  
 MAF JAZZ 20B  
 IPU MS GENERAL LEE 223Y

Homo Polled :: Homo Black :: 1274744 :: MAF 123G  
 1 Feb 2019 :: bw-106 :: adj ww-785



ce 34  
 bw 48  
 ww 746  
 yw 110.4  
 mce 2  
 mww 576  
 milk 20.3  
 api 109.44  
 ti 66.6

## MAF *Mac* 134G

Sire CCLT ALLIANCE 91C  
 WHEATLAND AFFILIATE 7128E  
 WHEATLAND LADY 308A

Dam LFE THE RIDDLER 323B  
 MAF MONTANA 75D  
 REMINGTON MISS MONTANA 76

Homo Polled :: Homo Black :: 1274834 :: MAF 134G  
 7 Feb 2019 :: bw-98 :: adj ww-804

123G offers more performance in the Affiliate sire group. He is a long spined bull that is smooth made yet carries his powerful muscle pattern perfectly. A very complete individual. His mother, an El Tigre daughter, who is excellent uddered and powerful, yet nicely made. There is a punch to this bull and his pedigree.

This bull is a full brother in blood to the lead off Affiliate son, backed by another high ranking Riddler daughter. These cows are very productive and have really shown us what they can do over the last two calf crops. This bull is a stout made individual, with lots of top and middle in him. He moves out freely and is a complete package that will excel in siring cattle that weigh up at weaning time and gain well.





# MAF *Mac* 142G

Homo Polled :: Homo Black :: 1281372 :: MAF 142G  
8 Feb 2019 :: bw-98 :: adj ww-830

ce	bw	ww	yw	mce	mww	milk	api	ti
5.8	4.8	81.3	119.9	4.6	63.0	22.3	110.69	65.26

Sire NCB COBRA 47Y  
**MAF KING COBRA 3C**  
MAF STAR 31A

Dam SVS CAPTAIN MORGAN 11Z  
**MAF PASHMENIA 265C**  
NUG PASHMENIA 403P

The last and the best King Cobra son we have raised. This baldie bull is complete as they come and the kind that you really must appreciate for his overall balance, muscle, depth and rib shape. The King Cobra's are performance orientated cattle, have huge growth and when mated to a full sister to MAF Drunken Sailor 266C, it proved to be dynamite! This bull gets out and moves with ease and is a bull that is easily spotted by visitors. A bull who's got a lot of jam but considering maternal traits is also very appealing. All around all star that will be a great addition to any program that brings a great balance of performance and maternal qualities.



ce 9.3  
 bw 3.2  
 ww 79.1  
 yw 122.1  
 mce 6.4  
 mww 56.7  
 milk 171  
 api 122.59  
 ti 72.29

## MAF *Ma* 179G

Sire MR CCF VISION  
**ACS BLACK OUT 522C**  
 ACSTUNDA 386A

Dam LFE THE RIDDLER 323B  
**MAF FANCY 88E**  
 MAF FANCY 70B

Homo Polled :: Homo Black :: 1274891 :: MAF 179G  
 19 Feb 2019 :: bw-96 :: adj ww-848

This end of February Black Out son is a very impressive bull. Black Out was a Vision son we used as our clean up black heifer bull, with great results. This bull is long bodied, thick made, yet smooth, nice boned and clean in his lines. He has always been a bull that would catch your eye with this blend of power and phenotype. What makes me like this bull even more is his outstanding dam, she would be ranked as one of the very best 3-year-old cows here. She is beautifully made with flawless udder structure and obviously is a producer, cranking out this bull on her first go!



ce 10.9  
 bw 0.5  
 ww 75.4  
 yw 114.6  
 mce 71  
 mww 58.7  
 milk 21  
 api 127.16  
 ti 74.03

## MAF *Ma* 192G

Sire MR CCF VISION  
**ACS BLACK OUT 522C**  
 ACSTUNDA 386A

Dam LFE THE RIDDLER 323B  
**MAF FINALE 292D**  
 DOWNHILL MS IRONMAIDEN16Z

Polled :: Hetero Black :: 1274912 :: MAF 192G  
 23 Feb 2019 :: bw-74 :: adj ww-853

These two Black Out sons would be 3/4 brothers in blood and pattern similarly. A young bull that has lots of growth, shape and muscle to him. 192G exhibits a smooth and well-balanced design on a moderate frame size. Moderate birth weight and excellent growth spread, prove this bull looks good on paper and in person. His mother is an absolute tank of a cow, a fall born first calver and did an excellent job here.



ce 0.8  
 bw 5.9  
 ww 86.2  
 yw 131.1  
 mce 0.5  
 mww 60.9  
 milk 178  
 api 117.25  
 ti 73.21

If you are looking for a moderate, stout herd bull that is full of character, check out this March bull! You really must appreciate this bull for his stoutness, rib shape, depth and performance. He is sired by a Red Rocket son we used for clean-up bull and his calves are packed full of performance and growth. This bull is in the top 3% for weaning and yearling weights.

## MAF *Mar* 218G

Homo Polled :: Black :: 1274929 :: MAF 218G  
 7 Mar 2019 :: bw-104 :: adj ww-894

Sire COME AS U R RED ROCKET  
**MAF MR 230D**  
 BLACKSAND LINNETTE 934W

Dam LFE THE RIDDLER 323B  
**MAF POCAHONTAS 137D**  
 IPU 52N POCAHONTAS 215U



ce 0.9  
 bw 6.1  
 ww 88.2  
 yw 134.7  
 mce 1.5  
 mww 63.3  
 milk 19.2  
 api 115.69  
 ti 72.81

Another stout and powerful 230D son, just a middle of March, his bull has tremendous growth and power. He has maturity, thickness, softness, depth and length to him. A primarily different twist on a black pedigree on both sides, his dam is a full sister to the dams of lots 45 & 50. A powerful cow family that is easy to get behind. If you sell calves by the pound, be sure to have a look at this young bull.

## MAF *Mar* 229G

Polled :: Homo Black :: 1274941 :: MAF 229G  
 15 Mar 2019 :: bw-105 :: adj ww-927

Sire COME AS U R RED ROCKET  
**MAF MR 230D**  
 BLACKSAND LINNETTE 934W

Dam LFE THE RIDDLER 323B  
**MAF MONTANA 73D**  
 REMINGTON MISS MONTANA 76



ce 3.9  
 bw 4.3  
 ww 85.4  
 yw 130  
 mce 0.7  
 mww 63.9  
 milk 21.2  
 api 117.23  
 ti 72.25

This year we are offering two 2-year-old bulls. These bulls were both catalogued last year but at semen testing time had frost damage so were pulled from the sale. Both bulls came around and passed their tests last spring. 163F is a black Westcott son that is a maternal brother to the lead off and high selling black bull from last year, MAF Patriot 32F, that sold to Rust Mountain View Ranch. 163F is a nice option for producers that prefer black but like the qualities and characteristics of the Westcott's. He is moderate framed, soft in his design, big middled and good footed. A bull that is very balanced in phenotype and backed by an excellent donor cow. We have an outstanding maternal sister that has also entered our flush program and have another exciting set of embryo calves off 163F's dam this year.



## MAF *Ma* 163F

Sire TNT 90 PROOF Z401  
**WFL WESTCOTT 24C**  
 WFL SWEET LICIOUS 1044X

Dam **DRAKE POKER FACE 2X**  
**MAF SABRINA 89B**  
 LRX BLACK SABRINA 90R

Homo Polled :: Hetero Black :: 1235097 :: MAF 163F  
 30 Jan 2018 :: bw-93 :: adj ww-866



ce 5.5  
 bw 4.0  
 ww 75.4  
 yw 114.0  
 mce .48  
 mww 54.1  
 milk 16.4  
 api 107.13  
 ti 66.0

A maternal brother to the last bull and a fall born full sib to MAF Patriot 32F owned by Rust Mountain View Ranch. This bull offers up a bit more frame size, nice muscle shape and softness to him. 257F is long spined and excellent footed. We were able to utilize Patriot via AI and have a very impressive set of calves on the ground now. Backed by an outstanding donor cow, this cow family is excellent uddered and excel in phenotype. This bull will add pounds, style and cover more cows for you.



## MAF *Ma* 257F

Sire SVS CAPTAIN MORGAN 11Z  
**MAF DRUNKEN SAILOR 266C**  
 NUG PASHMENIA 403P

Dam **DRAKE POKER FACE 2X**  
**MAF SABRINA 89B**  
 LRX BLACK SABRINA 90R

Homo Polled :: Hetero Black :: 1264264 :: MAF 257F  
 18 Sept 2018 :: bw-100 :: adj ww-n/a



ce 2.9  
 bw 5.3  
 ww 76.7  
 yw 115.5  
 mce 3.9  
 mww 65.9  
 milk 275  
 api 106.84  
 ti 6444

The only red Sailor son in the offering. This bull is consistent with what the Sailor sire group is known for; muscle shape, excellent hoof structure, easy fleshing ability and character. 252F is backed by a powerful Pocahontas 68M daughter that has produced highly marketable bulls over the years that have sold to Storebo Farms, Bill Seymour and Kurtis Bartlett. This bull provides the advantage of a bit more age and maturity to cover more cows.



# MAF *Mr* 252F

Homo Polled :: Red :: 1264254 :: MAF 252F  
 15 Sept 2018 :: bw-90 :: adj ww-

Sire SVS CAPTAIN MORGAN 11Z  
**MAF DRUNKEN SAILOR 266C**  
 NUG PASHMENIA 403P

Dam KOP CROSBY 137W  
**IPU 68M POCAHONTAS 177Y**  
 IPU RED POCAHONTAS 68M



ce 77  
 bw 3  
 ww 66.4  
 yw 93.3  
 mce 4.7  
 mww 52.4  
 milk 19.2  
 api 9733  
 ti 5708

This half blood bull is a very useful and practical bull for any cattle producer. He is stout made, big bodied and long spined. A bull that is soft in his design and good footed. He is full of herd bull character and will sire the right kind. The darkest red you can find, this bull will be sure to have friends sale day.



# MAF *Mr* 245F

Homo Polled :: Red :: 1294100 :: MAF 245F :: 1/2  
 10 Sept 2018 :: bw-93 :: adj ww-n/a

Sire MAF R HORIZON 7Y  
**MAF COWTOWN 27B**  
 REMINGTON MISS MONTANA 76

Dam **ANGUS/SIMMENTAL**





ce 94  
 bw 0.9  
 ww 64.7  
 yw 83.5  
 mce 5.3  
 mww 53.5  
 milk 211  
 api 109.34  
 ti 6469

This picture doesn't quite do this Rambler son the justice he deserves. He resembles many of his Horizon dam's qualities, moderate framed, stout, hairy and easy keeping. A bull with lots of middle and length to him and really gets out and moves well. A moderate birth weight and a bull that has continued to grow and gain well throughout the summer and fall.

## MAF *Ma* 240F

Sire WS PILGRIM H182U  
**RUST HENN RAMBLER 6003**  
 KAPPES SADIE M166

Dam MAF R HORIZON 7Y  
**IPU MS. HORIZON 1144**  
 REMINGTON NEONIA 36X

Homo Polled :: Red :: 1256361 :: MAF 240F :: 7/8  
 6 Sept 2018 :: bw-82 :: adj ww-n/a



ce 74  
 bw 2.8  
 ww 77.9  
 yw 103  
 mce 4.5  
 mww 56.2  
 milk 172  
 api 106.9  
 ti 68.79

250F would be a 3/4 brother to the last bull, another thick made individual with a lot of rib shape and width to him. A maternal brother to this bull was a sale highlight last year and sold to Sybout Lake Farms. This bull has a moderate birth weight and above average weaning weight EPD.

## MAF *Ma* 250F

Sire WS PILGRIM H182U  
**RUST HENN RAMBLER 6003**  
 KAPPES SADIE M166

Dam MAF R HORIZON 7Y  
**MAF PATRICIA 67B**  
 IPU MS. RED ESSENCE 167Y

Homo Polled :: Red :: 1264253 :: MAF 250F  
 14 Sept 2018 :: bw-82 :: adj ww-n/a





ce 2.8  
 bw 50  
 ww 81.1  
 yw 116.3  
 mce -0.7  
 mww 55.1  
 milk 14.5  
 api 100.2  
 ti 6769

# MAF *Ma* 258F

Homo Polled :: Red :: 1264256 :: MAF 258F  
 20 Sept 2018 :: bw-90 :: adj ww-n/a

Sire LFE BLACK LAKOTA 385W  
**NUG ROYAL RED 324A**  
 TRIPLE C SMARTY PANTS R

Dam MRL EL TIGRE 52Z  
**MAF FASCINATION 95B**  
 MCINTOSH FASCINATION 9X

The final Royal Red bull to be sold here, this dark red bull is ideal in his type and kind and will be a practical breeding piece for his new owners. After going through this catalogue, it's easy to see the impact Royal Red has had on our program. We have an outstanding set of young cows that are outdoing themselves on their production.



ce 7.4  
 bw 3.6  
 ww 80.7  
 yw 116.4  
 mce 2.3  
 mww 58.1  
 milk 17.7  
 api 116.96  
 ti 70.54

# MAF *Ma* 61F

Homo Polled :: Red :: 1235246 :: MAF 61F  
 15 Jan 2018 :: bw-87 :: adj ww-806

Sire KUNTZ SHERIFF 8A  
**IPU RED DEPUTY 25C**  
 IPU 56U MS. RED LINER 81A

Dam MAF R HORIZON 7Y  
**MAF PANDORA 187D**  
 IPU MS RED SPECIALIST 17X

This is the second 2-year-old we decided should get a fair shot at being in the sale. To no fault of his own, he had frost damage to his testicles when we semen tested in February (that's a month I think we all hope to forget!) He passed his semen test in the spring, so we held him over. He is a virgin 2-year-old. The Deputy bulls last year were a popular sire group and we are really pleased with the Deputy sired females we now have working here. Out of another really nice first calving Horizon daughter, 61F has bold rib shape, depth of body, muscle and excellent balance all in a moderate frame.



## Commercial Heifers

This year we are please to offer 12 commerical bred heifers. These females are bred to a Simmental bull that we used successfully as a clean-up bull and managed exactly the same as the purebreds. They are pregnancy tested to calve from the beginning of April to early May. We will have them sorted and sell in groups of 2-3 head sale day. If you have any questions regarding these females, please give us a call.



ce 0.7  
 bw 5.5  
 ww 85  
 yw 131.2  
 mce -1.1  
 mww 64  
 milk 21.5  
 api 111.17  
 ti 71.39

# MAF *Keepsake* 2G

Homo Polled :: Red :: 1274414 :: MAF 2G  
 1 Jan 2019 :: bw-100 :: adj ww-783

Sire CDI AUTHORITY 77X  
**KWA LAW MAKER 59C**  
 KWA MS ROCK 14X

Dam WFL WESTCOTT 24C  
**MAF KEEPSAKE 106E**  
 IPU MS. SPECIALIST 241Y

A feature heifer to start off the open replacement section of the sale. This beautiful Law Maker daughter is going to be an excellent breeding piece for any herd. She is stout but long bodied and has so much extension through her front third. A heifer that offers a nice combination of power and femininity.



ce 4.7  
 bw 2.9  
 ww 73.9  
 yw 105.5  
 mce 0.3  
 mww 53.9  
 milk 16.9  
 api 119.81  
 ti 69.48

# MAF *Tara* 256F

Homo Polled :: Red :: 1256364 :: MAF 256F  
 17 Sept 2018 :: bw-88 :: adj ww-n/a

Sire KUNTZ SHERIFF 8A  
**IPU RED DEPUTY 25C**  
 IPU 56U MS. RED LINER 81A

Dam MAF R HORIZON 7Y  
**MAF 7Y TARA 68Y 146Z**  
 MAF 930W TARA 124S 68Y

The only fall born heifer in the offering. This Deputy female is very complete, deep bodied, strong topped and has a real broody look to her. As mentioned before, we are pleased with our Deputy females that are in production here. They are the right kind.



ce 7  
 bw 2.5  
 ww 72.2  
 yw 102.3  
 mce 5  
 mww 59  
 milk 22.9  
 api 109.58  
 ti 67.72

# MAF *Lisa* 12G

Homo Polled :: Red :: 1274517 :: MAF 12G  
 12 Jan 2019 :: bw-85 :: adj ww-734

Sire WS PILGRIM H182U  
**RUST HENN RAMBLER 6003**  
 KAPPES SADIE M166

Dam NUG ROYAL RED 324A  
**MAF LISA 239E**  
 SWAN LAKE LISA 14Y

This Rambler daughter is off a first calver, who would be a maternal sister to MAF Lampman 1C. Lampman sold to Ferme LeBlond and was our high selling bull that year. A very useful female that should be a strong producer.



ce 8.7  
 bw 2.5  
 ww 71.7  
 yw 95.4  
 mce 5.6  
 mww 49.3  
 milk 13.4  
 api 99.71  
 ti 62.15

# MAF *Goldie* 16G

Polled :: Red :: 1274599 :: MAF 16G  
 14 Jan 2019 :: bw-77 :: adj ww-664

Sire WS PILGRIM H182U  
**RUST HENN RAMBLER 6003**  
 KAPPES SADIE M166

Dam MAF LAMPMAN 1C  
**MAF GOLDIE 39E**  
 IPU MS. RED ESSENCE 209X

This red baldie female will catch your eye, is stout made, smooth and complete in her design. 16G has lots of middle to her and great hair. Out of a first calving Lampman daughter, that is the right kind. If you are looking to raise more red baldies don't miss out on this one.



ce 2.8  
 bw 54  
 ww 75.8  
 yw 116.7  
 mce 2.5  
 mww 63.4  
 milk 25.5  
 api 113.5  
 ti 65.33

# MAF *Satin* 188G

Homo Polled :: Red :: 1274905 :: MAF 188G  
 22 Feb 2019 :: bw-103 :: adj ww-773

Sire **SPRINGCREEK LINER 56U** Dam **SWAN LAKE CHOSEN ONE 3X**  
**SPRINGCREEK LAUNCH 110E** **SVS RED SATIN 45Z**  
 SPRINGCREEK BROOKE 68Z SVS RED SATIN 15W

Only two opportunities to get in on the Launch females and this is one of them. This heifer is an end of February heifer that is ideal in her type and kind, hairy, thick made and as long as they come. Her dam is a high-performance cow that has been a solid producer.



ce 8.1  
 bw 17  
 ww 59.4  
 yw 87.3  
 mce 6.4  
 mww 53.7  
 milk 24  
 api 109.69  
 ti 58.61

# MAF *Mojora* 46G

Polled :: Red :: 1274724 :: MAF 46G :: 3/4  
 21 Jan 2019 :: bw-85 :: adj ww-646

Sire **SPRINGCREEK LINER 56U** Dam **MAFTHUNDER STRUCK 44B**  
**SPRINGCREEK LAUNCH 110E** **MAFTG MOJORA 90D**  
 SPRINGCREEK BROOKE 68Z ANGUS/ANGUS

This Launch daughter is off a beautiful red half blood cow. She has tons of hair and depth of body. 46G is also long spined and feminine. This will be a strong producing female for her future owner. Her maternal sister sold last year to Brian Robertson, Ontario.



ce 11.3  
 bw -0.2  
 ww 53.8  
 yw 81.6  
 mce 5.3  
 mww 50.5  
 milk 23.6  
 api 133.96  
 ti 64.61

# MAF *Pocahontas* 209G

Polled :: Red :: 1274931 :: MAF 209G  
 4 Mar 2019 :: bw-77 :: adj ww-714

Sire **IPU RED SPECIALIST 70T** Dam **MAF RED RAMBO 131B**  
**MAF MR 120C** **MAF POCAHONTAS 3D**  
 IPU MS. RED WESTERN 122A MAF POCAHONTAS 4B

209G is a heifer that brings a pedigree full of calving ease specialists. Her sire, 120C, is a good-looking herd bull that has a son in the sale as well and these cattle are the right kind. They are moderate framed, stout and eye appealing. A March born heifer that has a lot of style and stoutness to her and backed by a legendary cow family.



ce 10  
 bw 1.4  
 ww 64.8  
 yw 97.5  
 mce 7.6  
 mww 60.1  
 milk 27.7  
 api 130.04  
 ti 67.93

# MAF *Lisa* 212G

Polled :: Red :: 1274939 :: MAF 212G  
 5 Mar 2019 :: bw-82 :: adj ww-761

Sire **IPU RED SPECIALIST 70T** Dam **SLF RED HUMMER 81U**  
**MAF MR 120C** **SWAN LAKE LISA 14Y**  
 IPU MS. RED WESTERN 122A SLF MISS SWAN 23W

Another 120C "Specialist" daughter, this one from the same cow family as lot 66. She is maternal sister to MAF Lampman, who has been doing a great job out in Quebec for the LeBlond family. This female has a different pedigree than most and offers lots of versatility when choosing her mating.



ce 8.5  
 bw 17  
 ww 72.8  
 yw 104.9  
 mce 17  
 mww 63.7  
 milk 273  
 api 12796  
 ti 71.9

# MAF *Goldie* 183G

Homo Polled :: Red :: 1274911 :: MAF 183G  
 20 Feb 2019 :: bw-75 :: adj ww-726

Sire MRL 91Y  
**MRL THE STARTER 39C**  
 MRL MISS 3379A

Dam WFL WESTCOTT 24C  
**MAF GOLDIE 143E**  
 IPU MS. RED ESSENCE 216X

A dark red Starter female out of a first calving Westcott daughter with a moderate birthweight. This female is dark red, has lots of hair and is complete made. 183G hails from the same cow family as one of our high selling red bred heifers who sold to Double Bar D, MAF Goldie 140E, is now a donor female in their program.



ce 2  
 bw 54  
 ww 68.5  
 yw 103.8  
 mce 0.7  
 mww 55.3  
 milk 21  
 api 111.27  
 ti 62.7

# MAF *Tara* 200G

Polled :: Red :: 1274922 :: MAF 200G  
 26 Feb 2019 :: bw-102 :: adj ww-707

Sire COME AS U R RED ROCKET  
**MAF MR 230D**  
 BLACKSAND LINNETTE 934W

Dam WHEATLAND STOUT 930W  
**MAF TARA 55Z**  
 SPRINGCREEK TARA 124S

A red daughter of the 230D bull, if you have a look at her paternal brothers, you will find easy keeping, powerful bulls with lots of growth. She is very a nice made female, with a great balance of thickness and eye appeal.



ce 5.4  
 bw 3  
 ww 75.8  
 yw 110.7  
 mce 2.5  
 mww 59.3  
 milk 214  
 api 114.97  
 ti 67.52

# MAF *Rita* 22G

Homo Polled :: Red :: 1274530 :: MAF 22G  
 16 Jan 2019 :: bw-80 :: adj ww-722

Sire KUNTZ SHERIFF 8A  
**MRL SLEEP EASY 140D**  
 MRL MISS 836W

Dam WFL WESTCOTT 24C  
**MAF RITA 29E**  
 IPU MS. RED DECK 57W

A dark red Sleep Easy daughter that is long bodied and smooth made. This heifer has big time growth numbers and a moderate birthweight. Her dam is a very nice uddered Westcott daughter.



ce 10.8  
 bw 24  
 ww 79.9  
 yw 112.4  
 mce 4.2  
 mww 57.8  
 milk 178  
 api 126.68  
 ti 74.6

# MAF *Tara* 26G

Homo Polled :: Black :: 1274528 :: MAF 26G  
 17 Jan 2019 :: bw-89 :: adj ww-768

Sire W/C LOADED UP 1119Y  
**W/C BANKROLL 811D**  
 MISSWERNING KP 8543U

Dam MR CCFVISION  
**CROWE TARA 6E**  
 MAFTARA 6B

This fancy Bankroll daughter is Brenna & Britt's heifer off their first calver they bought from Crowe Brothers. A female that will bring style and power into a very complete made package. Her dam is a powerful, big bodied cow with a good udder.



ce 76  
 bw 5  
 ww 778  
 yw 113.2  
 mce 3.9  
 mww 575  
 milk 18.7  
 api 10787  
 ti 68.67

# MAF *Montana* 232G

Homo Polled :: Hetero Black :: 1274945 :: MAF 232G  
 27 Mar 2019 :: bw-96 :: adj ww-786

Sire MR CCF VISION  
**ACS BLACK OUT 522C**  
 ACSTUNDA 386A

Dam WFL WESTCOTT 24C  
**MAF MONTANA 154E**  
 MAF MONTANA 38B

If Brenna had her way, this heifer would not be in the sale, but life lessons are just that. This is a sale feature end of March born heifer that you won't need to look hard to find. She is moderate framed, big middled, thick and extremely nice fronted. This one has style to burn and would be very competitive.



ce 42  
 bw 51  
 ww 794  
 yw 122.9  
 mce 3  
 mww 521  
 milk 124  
 api 98.98  
 ti 63.99

# MAF *Melody* 27G

Homo Polled :: Hetero Black :: 1274535 :: MAF 27G  
 17 Jan 2019 :: bw-100 :: adj ww-765

Sire SVS CAPTAIN MORGAN 11Z  
**MAF DRUNKEN SAILOR 266C**  
 NUG PASHMENIA 403P

Dam FBF1 COMBUSTIBLE  
**MAF MELODY 165C**  
 REMINGTON MELODY 62S

A Sailor heifer that is moderate, stout and easy keeping. She has huge growth numbers and should be a real bull maker. This tanky heifer's dam is a long bodied, tidy uddered Combustible female.



ce 72  
 bw 3.1  
 ww 80.3  
 yw 124.9  
 mce 4.2  
 mww 64  
 milk 23.8  
 api 126.41  
 ti 71.95

# MAF *Mejora* 38G

Polled :: Hetero Black :: 1274525 :: MAF 38G :: 3/4  
 19 Jan 2019 :: bw-98 :: adj ww-748

Sire WS STEPPING STONE B44  
**CROSSROAD RED STONE 10E**  
 IPU MS. CODE RED 249A

Dam SAV FINAL ANSWER 0035  
**BLACKSAND TARA LEE 93A**  
 BLACKSAND TARA LEE 80Y

The only Red Stone female to be sold, this black heifer is very attractive, long bodied and thick made. Her dam is a big bodied half blood cow that came from the Blacksand Dispersal. We are very excited about these Red Stone females as they are an outstanding group.



ce 76  
 bw 2.1  
 ww 65.6  
 yw 93.9  
 mce 4.3  
 mww 56.8  
 milk 24  
 api 113.71  
 ti 63.97

# MAF *Tyra* 119G

Polled :: Black :: 1274548 :: MAF 119G  
 1 Feb 2019 :: bw-75 :: adj ww-671

Sire CCLT ALLIANCE 91C  
**WHEATLAND AFFILIATE 7128E**  
 WHEATLAND LADY 308A

Dam NCB COBRA 47Y  
**MAF TYRA 19D**  
 MAFTYRA 232B

A long bodied, nice made Affiliate daughter here. The Affiliate females will not be readily available, so this an opportunity to add some of the exclusive genetics to your herd. Her dam is a typical Cobra female that has quite a bit of calving ease and is a maternal sister to Britt's 4-H heifer, Scarlet. The udder quality in this cow family is excellent.



ce -0.4  
 bw 6.4  
 ww 77.9  
 yw 105.4  
 mce -5.5  
 mww 56.2  
 milk 17.2  
 api 97.28  
 ti 63.72

# MAF *Lady* 169G

Polled :: Black :: 1274865 :: MAF 169G  
 16 Feb 2019 :: bw-100 :: adj ww-746

Sire CCLT ALLIANCE 91C  
**WHEATLAND AFFILIATE 7128E**  
 WHEATLAND LADY 308A

Dam MRL EL TIGRE 52Z  
**MAF LADY 91B**  
 IPU MS. RED ESSENCE 257U

Another Affiliate daughter that is long bodied, smooth made and thick. The Affiliates have excellent hair coats and this heifer follows suit. 169G will be a powerful cow, like her dam.



ce 7.1  
 bw 4.5  
 ww 66.6  
 yw 98.9  
 mce 3.7  
 mww 53.3  
 milk 20  
 api 101.19  
 ti 60.95

# MAF *Noremac* 215G

Polled :: Hetero Black :: 1274918 :: MAF 215G  
 7 Mar 2019 :: bw-97 :: adj ww-711

Sire MR CCFVISION  
**ACS BLACK OUT 522C**  
 ACSTUNDA 386A

Dam NUG ROYAL RED 324A  
**MAF NOREMAC 221E**  
 IPU 16M MS. NOREMAC 261X

Another Black Out daughter that is stylish, long with a bit more frame size than the other Black Out daughters. Out of a first calving Royal Red daughter, she is a member of the powerful Noremac cow family that has been highlighted through this catalogue.



ce 10  
 bw 0.9  
 ww 63.6  
 yw 97.6  
 mce 7.1  
 mww 54.5  
 milk 22.7  
 api 126.86  
 ti 68.16

# MAF *Shamrock* 230G

Polled :: Black :: 1274884 :: MAF 230G  
 16 Mar 2019 :: bw-76 :: adj ww-720

Sire MR CCFVISION  
**ACS BLACK OUT 522C**  
 ACSTUNDA 386A

Dam LFE THE RIDDLER 323B  
**MAF SHAMROCK 183E**  
 IPU MS. EXCITER 2W

These late March heifers sired by Black Out are an extremely strong set. Another moderate framed, stout and stylish heifer. Backed by a beautiful two-year-old that we unfortunately lost this summer but was ideal in her type and kind. Three maternal sisters to the dam sold in the last Maidens of the Meadow to Crowe Brothers, Downhill Simmentals and Circle M Simmentals.



ce 9.3  
 bw 2.3  
 ww 66  
 yw 94.9  
 mce 5.1  
 mww 51.5  
 milk 18.5  
 api 109.74  
 ti 64.38

# MAF *Pocahontas* 234G

Polled :: Hetero Black :: 1274947 :: MAF 234G  
 28 Mar 2019 :: bw-80 :: adj ww-767

Sire MR CCFVISION  
**ACS BLACK OUT 522C**  
 ACSTUNDA 386A

Dam NUG ROYAL RED 324A  
**MAF POCAHONTAS 210E**  
 MAF POCAHONTAS 181B

The youngest Black Out heifer of the offering and not to be out done or classed by the others, she is thick, tanky and moderate framed. She has nice extension through her front third, long spined and attractive made. The Black Out daughters we calved out this year are a good group, similar in type to these heifers, moderate, tanky with nice udders. They will be very practical, useful females.



**BOHRSON**  
MARKETING SERVICES  
RR 4 - SITE 7 - BOX 28  
OLDS, AB :: T4H 1T8



RETURN POSTAGE GUARANTEED  
PORT DE RETOUR GARANTI

